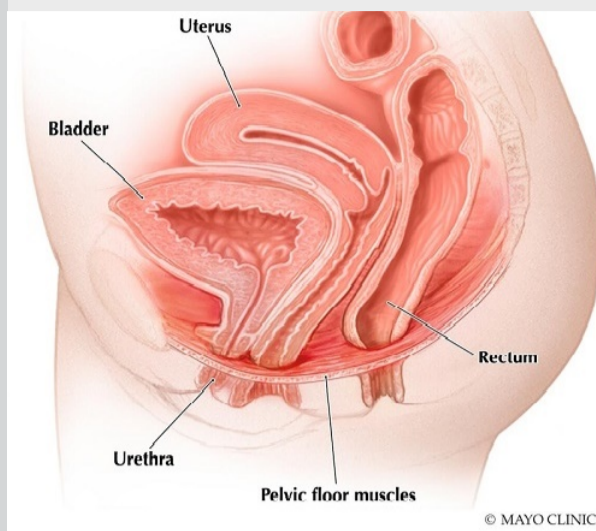


Urology Physician Update

December 2022

Patient Care



Novel treatment for proximal female urethral strictures

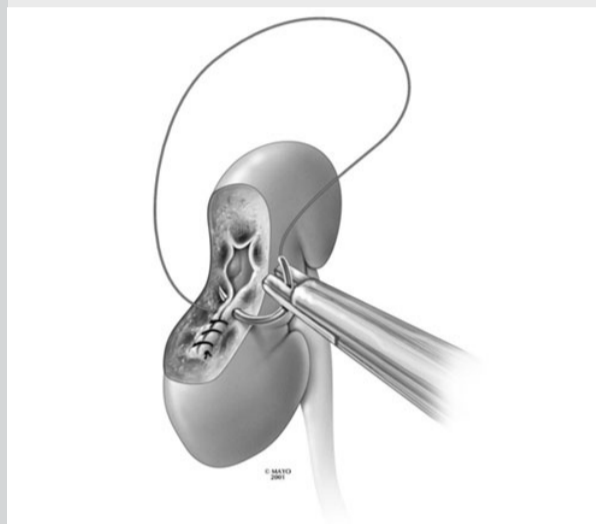
Mayo Clinic urologists published a new technique using a buccal graft to manage mid and proximal female urethral strictures.

[Learn more](#)

[See more Urology news](#)

[View Urology specialty videos and Grand Rounds presentations](#)

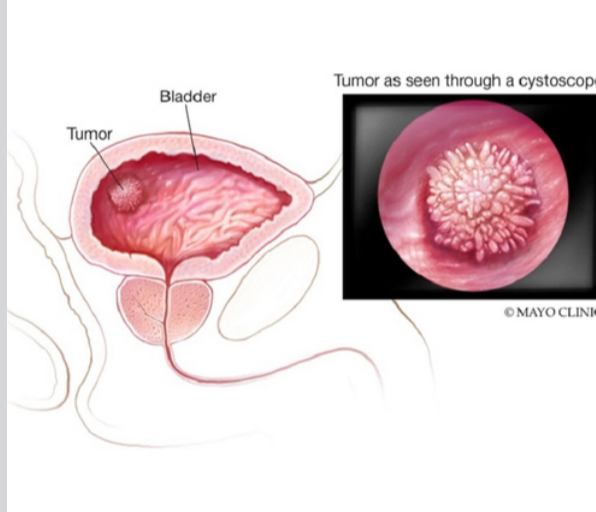
Research



Partial nephrectomy, lower rates of chronic kidney disease progression

A recent Mayo Clinic study retrospectively evaluates patients undergoing either radical nephrectomy or partial nephrectomy for unilateral solid renal masses.

[Learn more](#)



Study supports lymph node dissection for patients with nonmuscle-invasive bladder cancer

A recent study found that patients with NMIBC who undergo a radical cystectomy also should receive a lymph node dissection.

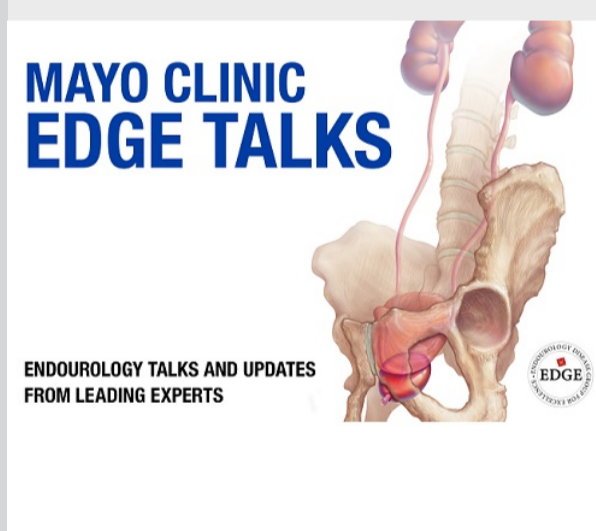
[Learn more](#)

[See all Urology Clinical Trials at Mayo Clinic](#)

Education

Mayo Clinic School of Continuous Professional Development offers [live courses](#), [livestreaming courses](#), [online continuing medical education \(CME\) courses](#) and [podcasts](#) to meet your CME needs.

[See all Urology Continuing Medical Education courses](#)



EDGE Talks 2020: Endourology Talks & Updates — Online CME Course with Audit Option Available until May 30, 2023 Online CME Course

This online series discusses the use of holmium lasers in urology for the management of various diseases, with a focus on the management of urolithiasis and benign prostatic hyperplasia.

[Register Now](#)

COVID-19 Updates and Resources

[Read more](#)

Consults and Referrals

Phoenix/Scottsdale, Arizona
866-629-6362

Jacksonville, Florida
800-634-1417

Rochester, Minnesota
800-533-1564

[Online Referrals](#)

Resources

[Life-Changing Careers](#)

[Clinical Trials](#)

[Mayo Clinic School of Continuous Professional Development](#)



[Comments?](#)

We're interested in your feedback about this newsletter.

[Pass It On](#)

Invite a friend to subscribe.