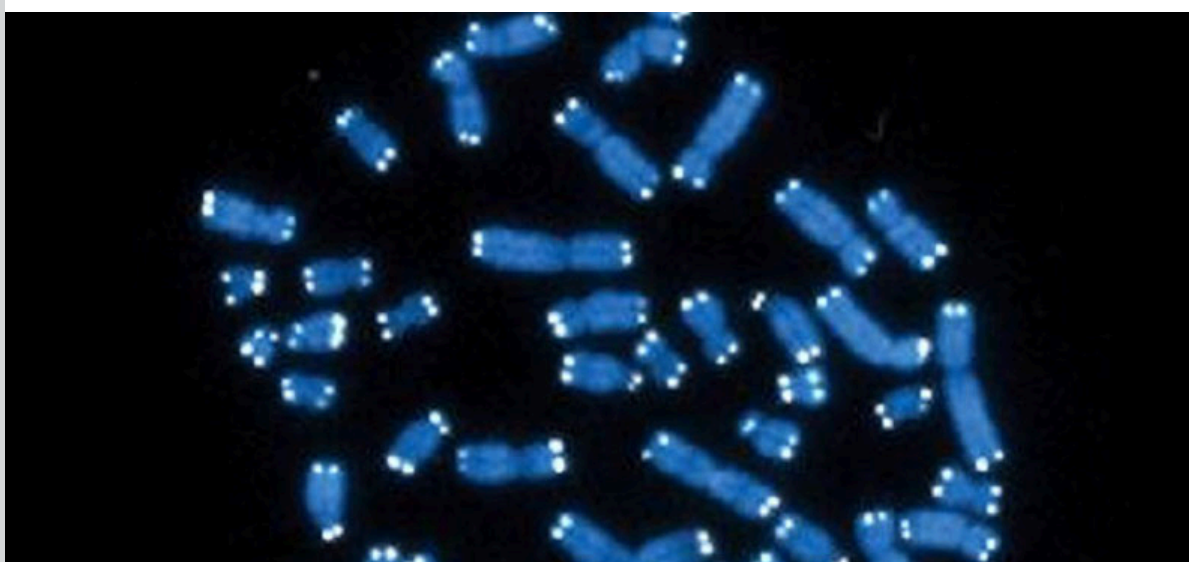


# Pulmonology Physician Update

May 2024



**READ** Research shows shortened telomeres increase risk of lung disease

## Research



### Study: Kefir can improve gut health of patients in the ICU

Gut microbiome derangement is frequent in the ICU, potentially leading to a heightened risk of infections, organ failure, septic shock and mortality. A recent study assessed the safety, feasibility and impact of kefir administration on the gut microbiome on patients in the ICU setting.

[Learn more](#)

## Patient Care

[Refer a Patient](#)

[See more Pulmonary Medicine news](#)

[View Pulmonary Medicine specialty videos and Grand Rounds presentations](#)

## Education

Mayo Clinic School of Continuous Professional Development offers [live courses](#), [livestreaming courses](#), [online continuing medical education \(CME\) courses](#) and [podcasts](#) to meet your CME needs.

[See all Pulmonary Medicine and Critical Care Medicine Continuing Medical Education courses](#)



**Mayo Clinic Sleep Medicine Update 2024**  
July 31-Aug. 3, 2024  
Vancouver, British Columbia, and Livestream

This course reviews the latest advances in practice and research using case-based scenarios enriched with personal clinical experiences. It is designed to provide attendees with a comprehensive review of sleep disorders and practical steps to enhance clinical skills and practice.

[Register Now](#)



**Mayo Clinic Mechanical Ventilation Conference 2024**  
Oct. 16-19, 2024  
Oceanside, Calif., and Livestream

This conference provides high-quality education and detailed hands-on instruction in mechanical ventilation management, bringing together physicians, respiratory therapists and other healthcare professionals who are involved in providing respiratory care every day.

[Register Now](#)



**Mayo Clinic Talks: Sleep Medicine Edition Online CME Course**  
Expires April 18, 2026  
Online Course

The podcast episodes in Mayo Clinic Talks: Sleep Medicine Edition contain podcast interviews about sleep medicine and specifically the presentation, diagnosis and management of a range of common sleep disorders.

[Register Now](#)

## Consults and Referrals

Phoenix/Scottsdale, Arizona  
866-629-6362

Jacksonville, Florida  
800-634-1417

Rochester, Minnesota  
800-533-1564

[Online Referrals](#)

## Resources

[Life-Changing Careers](#)

[Clinical Trials](#)

[Mayo Clinic School of Continuous Professional Development](#)



Comments?

We're interested in your feedback about this newsletter.

Pass It On

[Invite a friend to subscribe.](#)