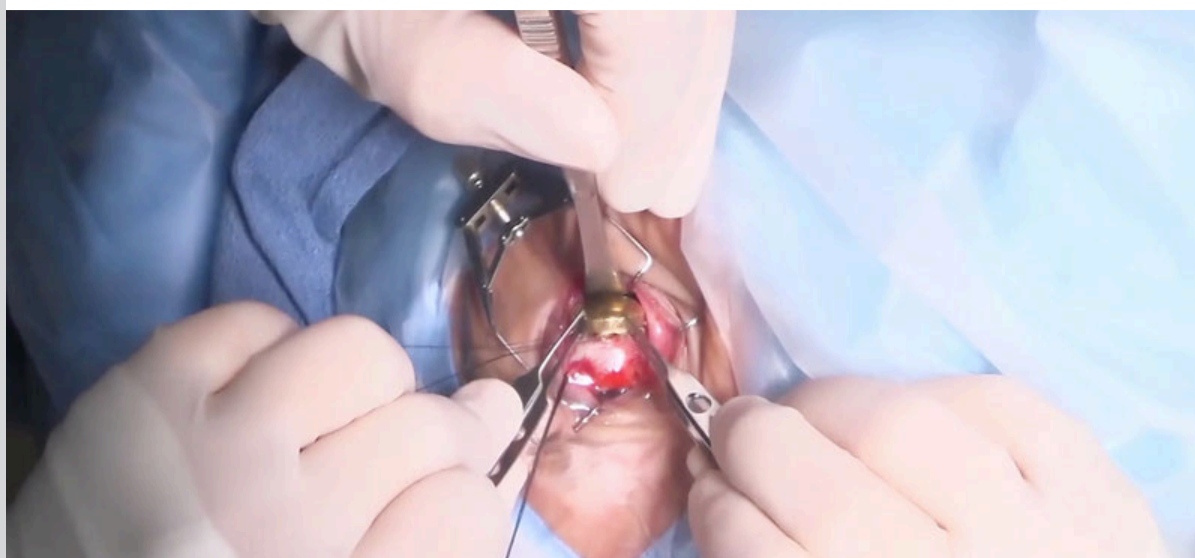


Ophthalmology Physician Update

September 2024



Treating choroidal melanoma using plaque radiotherapy 

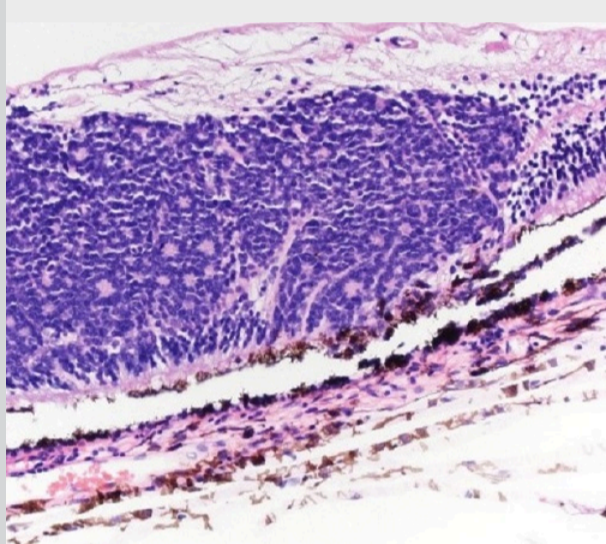
Patient Care



Oculofacial Plastics Clinic: Streamlined care, 3D-printing capabilities

The Mayo Clinic Oculofacial Plastics Clinic (OFPC) in Rochester, Minnesota, streamlines evaluation and treatment for people with complex periorbital reconstructive needs. Patients are evaluated by multiple specialists and receive any needed advanced testing, such as high-resolution CT scans for creation of 3D-printed models. Often, this can all be coordinated within a single day.

[Learn more](#)



Mayo Clinic Ophthalmic Pathology

Mayo Clinic has had a longtime tradition of expertise and excellence in the field of ophthalmic pathology. Currently, Ophthalmic Pathology includes four subspecialized pathologists who review more than 800 cases every year.

[Learn more](#)

Refer a Patient

[See more Ophthalmology news](#)

[View Ophthalmology specialty videos and watch recorded webinars](#)

[View Ophthalmology surgical videos and Grand Rounds presentations](#)

[Listen to the Mayo Clinic Ophthalmology podcast](#)

Research



AI-driven tools: Transforming healthcare and research

Through its patient care and research initiatives, Mayo Clinic has been busy building one of the largest repositories of clinical data in the world. One of the AI-driven tools developed within Mayo Clinic Ophthalmology is the Ophthalmology Parametric Universal Search.

[Learn more](#)

[See all Ophthalmology Clinical Trials at Mayo Clinic](#)

Education

Mayo Clinic School of Continuous Professional Development offers [live courses](#), [livestreaming courses](#), [online continuing medical education \(CME\) courses](#) and [podcasts](#) to meet your CME needs.

[See all Ophthalmology Continuous Medical Education courses](#)



Ophthalmology Update Online course

This online course offers comprehensive updates on ophthalmology and optometry that can be immediately applied to clinical practice.

[Take Course](#)

Consults and Referrals

Phoenix/Scottsdale, Arizona
866-629-6362

Jacksonville, Florida
800-634-1417

Rochester, Minnesota
800-533-1564

[Online Referrals](#)

Resources

[Life-Changing Careers](#)

[Clinical Trials](#)

[Mayo Clinic School of Continuous Professional Development](#)



[Comments?](#)

We're interested in your feedback about this newsletter.

[Pass It On](#)

Invite a friend to subscribe.