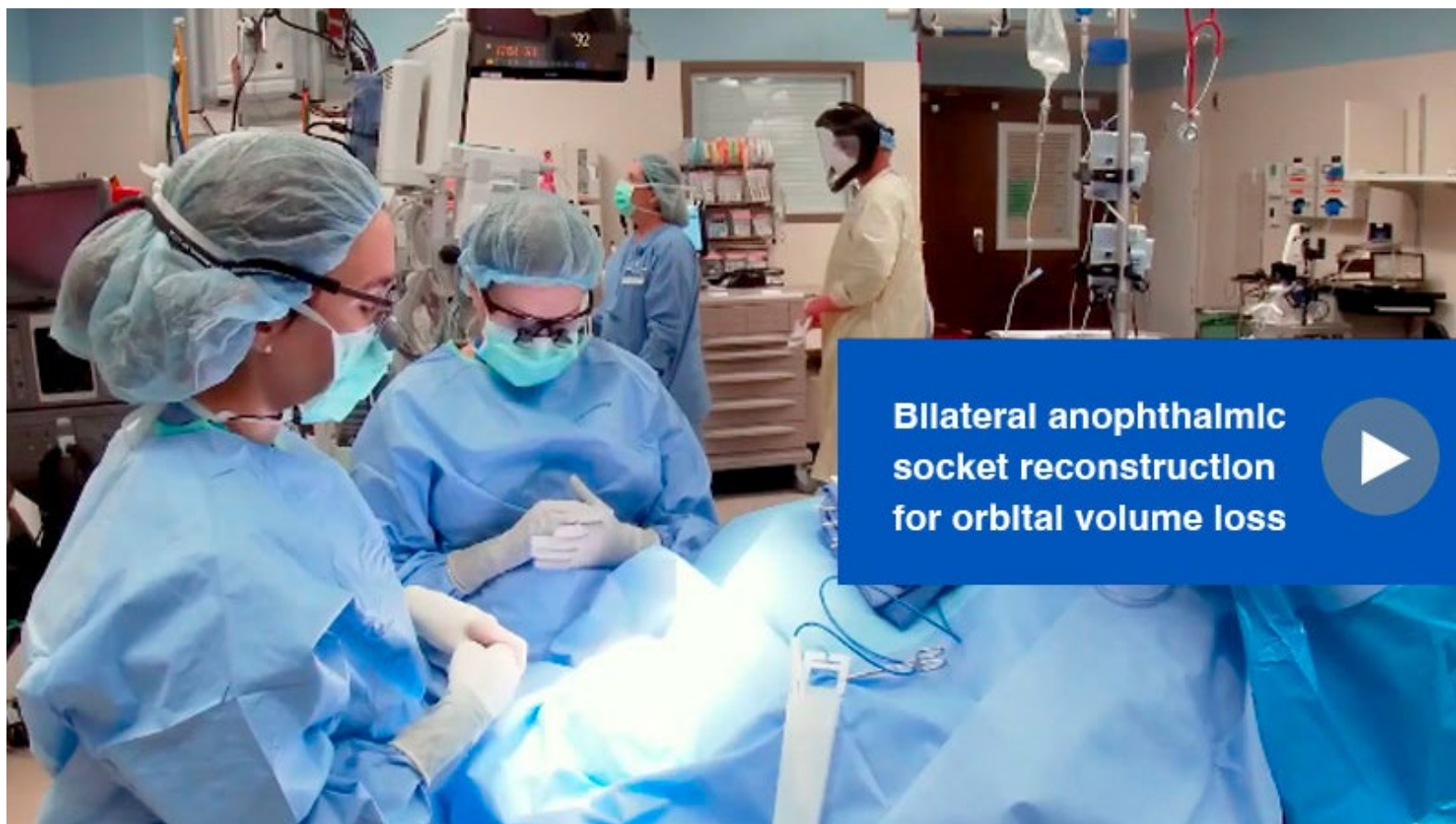


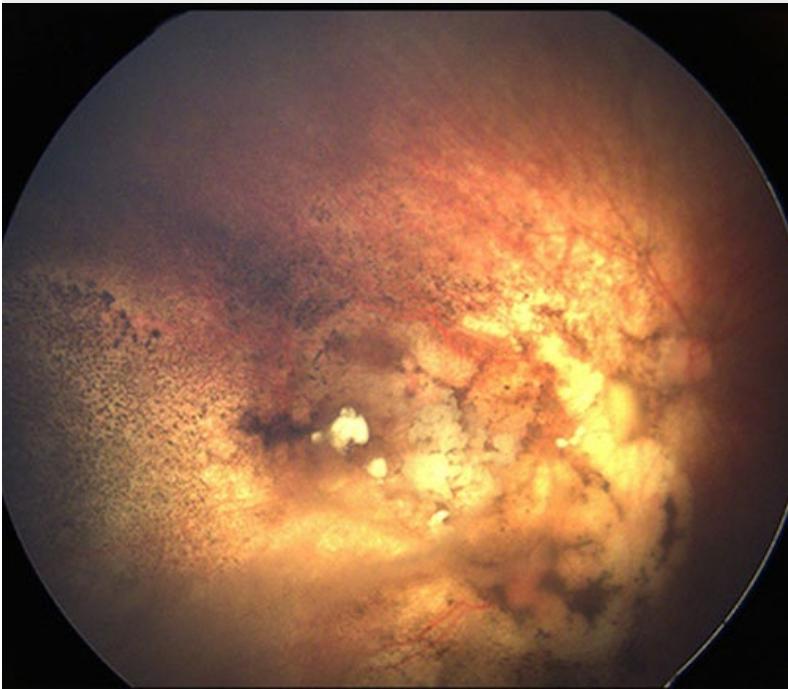


Ophthalmology Physician Update

May 2022



Patient Care



Pediatric retinoblastoma care grounded in global data and communication

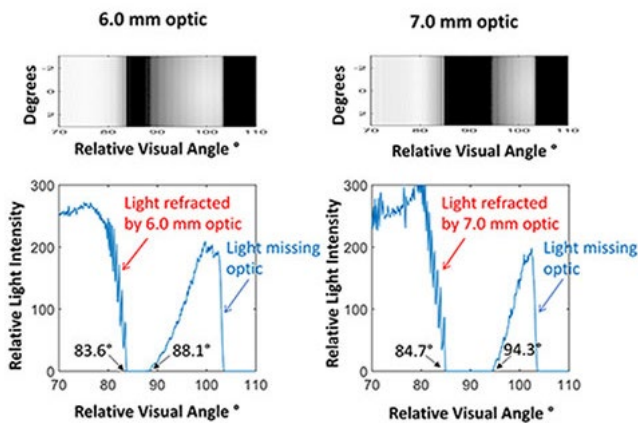
Evidence-based practices and communication are key to pediatric retinoblastoma care. Mayo Clinic physicians work collaboratively with one another, the patient's family and global data to advance care and optimize outcomes.

[Learn more](#)

[See more Ophthalmology news](#)

[View Ophthalmology specialty videos and Grand Rounds presentations](#)

Research



Negative dysphotopsia rates are lower when a 7.0 mm-diameter optic is used



Mobile app provides reliable alternative to Hertel exophthalmometry

Mayo Clinic researchers used ray-tracing analysis to compare the influence of 6.0 mm and 7.0 mm intraocular lens optic diameters on illumination of the peripheral retina.

[Learn more](#)

A simple-to-use mobile application yields reliable, accurate measurements in a timely, efficient manner — and may be a suitable alternative when Hertel exophthalmometry is not available for measurement of globe position.

[Learn more](#)



Ophthalmic irAEs can be treated without discontinuation of life-prolonging ICIs

Ophthalmic immune-related adverse events (irAEs) associated with using immune checkpoint inhibitors (ICIs) are rare, but ophthalmologists need to recognize irAEs and understand their treatment so life-prolonging ICIs can be continued.

[Learn more](#)

[See all Ophthalmology Clinical Trials at Mayo Clinic](#)

Education

Mayo Clinic School of Continuous Professional Development offers [live courses](#), [livestreaming courses](#), [online continuing medical education \(CME\) courses](#) and [podcasts](#) to meet your CME needs. Medical education from Mayo Clinic experts is also available through [GIBLIB](#), a new on-demand medical education library.

[See all Ophthalmology Continuous Medical Education courses](#)

COVID-19 Updates and Resources

[Read more](#)

Consults and Referrals

Phoenix/Scottsdale, Arizona

866-629-6362

Jacksonville, Florida

800-634-1417

Rochester, Minnesota

800-533-1564

Online Referrals

Resources

[Life-Changing Careers](#)

[Clinical Trials](#)

[Mayo Clinic School of Continuous Professional Development](#)



Comments?

We're interested in your feedback about this newsletter.

Pass It On!

Invite a friend to subscribe.

[MayoClinic.org](#) | [Newsletter Archive](#) | [Contact](#) | [Medical Professionals](#)
