

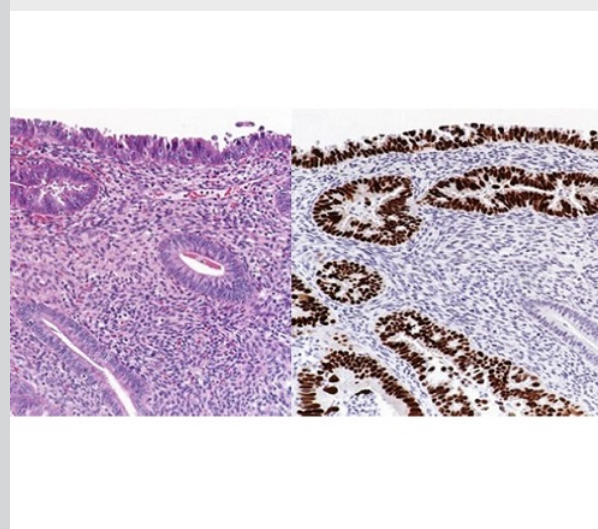
Obstetrics and Gynecology Physician Update

July 2023



Diagnosing hypertension in pregnant women using an algorithm

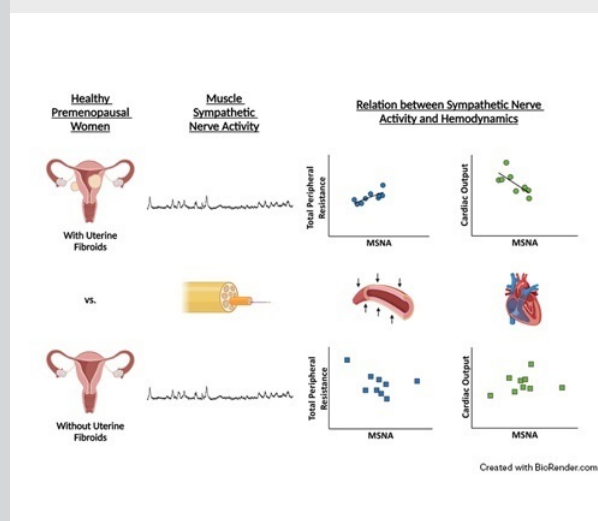
Research



Minimally invasive surgery has equivalent outcomes to open surgery for patients with high-risk endometrial cancer

Due to equivalent surgical and oncologic outcomes of minimally invasive surgery compared with open surgery for high-risk endometrial cancer, investigators recommend minimally invasive surgery.

[Learn more](#)



Study finds that women with uterine fibroids do not have high nerve activity

Contrary to their hypothesis, investigators did not find high nerve activity in women with uterine fibroids. They did find vascular distinctions between those with and without fibroids.

[Learn more](#)



Women with primary infertility more likely to have bilateral oophorectomy

A Mayo Clinic study finds an association between primary infertility and later bilateral oophorectomy. An author and reproductive endocrinology and fertility specialist explains the findings and their applications.

[Learn more](#)

[See all Obstetrics and Gynecology Clinical Trials](#)

Patient Care

[Refer a Patient](#)

[See more Obstetrics and Gynecology news](#)

[View Obstetrics and Gynecology specialty videos and Grand Rounds presentations](#)

Education

Mayo Clinic School of Continuous Professional Development offers live courses, livestreaming courses, online continuing medical education (CME) courses and podcasts to meet your CME needs.

[See all Obstetrics, Gynecology and Women's Health Continuous Medical Education courses](#)



GRIT for Women in Medicine: Growth, Resilience, Inspiration & Tenacity 2023

Oct. 26-28, 2023
White Sulphur Springs, W.Va., and Livestream

This course empowers women and men in medicine with skills and resources to remove barriers and bias of women in leadership positions specific to the challenges in healthcare.

[Register Now](#)



Multidisciplinary Update in Breast Disease 2023

Nov. 9-11, 2023
Naples, Fla., and Livestream

This two-and-a-half-day continuing medical education course provides a multidisciplinary update in prevention, evaluation, diagnosis, management, and treatment of benign and malignant breast diseases as well as high-risk and survivorship issues.

[Register Now](#)



OB/GYN Clinical and Surgical Updates: Staying Current and Ahead of the Curve 2024

Feb. 5-8, 2024
Napa, Calif., and Livestream

This sixth annual clinical and surgical course is drawing leading experts from Mayo Clinic campuses in Arizona, Florida and Minnesota and Mayo Clinic Health System. It is for all healthcare professionals involved in or interested in women's healthcare.

[Register Now](#)

Consults and Referrals

Phoenix/Scottsdale, Arizona
866-629-6362

Jacksonville, Florida
800-634-1417

Rochester, Minnesota
800-533-1564

[Online Referrals](#)

Resources

[Life-Changing Careers](#)

[Clinical Trials](#)

[Mayo Clinic School of Continuous Professional Development](#)



Comments?

We're interested in your feedback about this newsletter.

[Pass It On](#)

Invite a friend to subscribe.