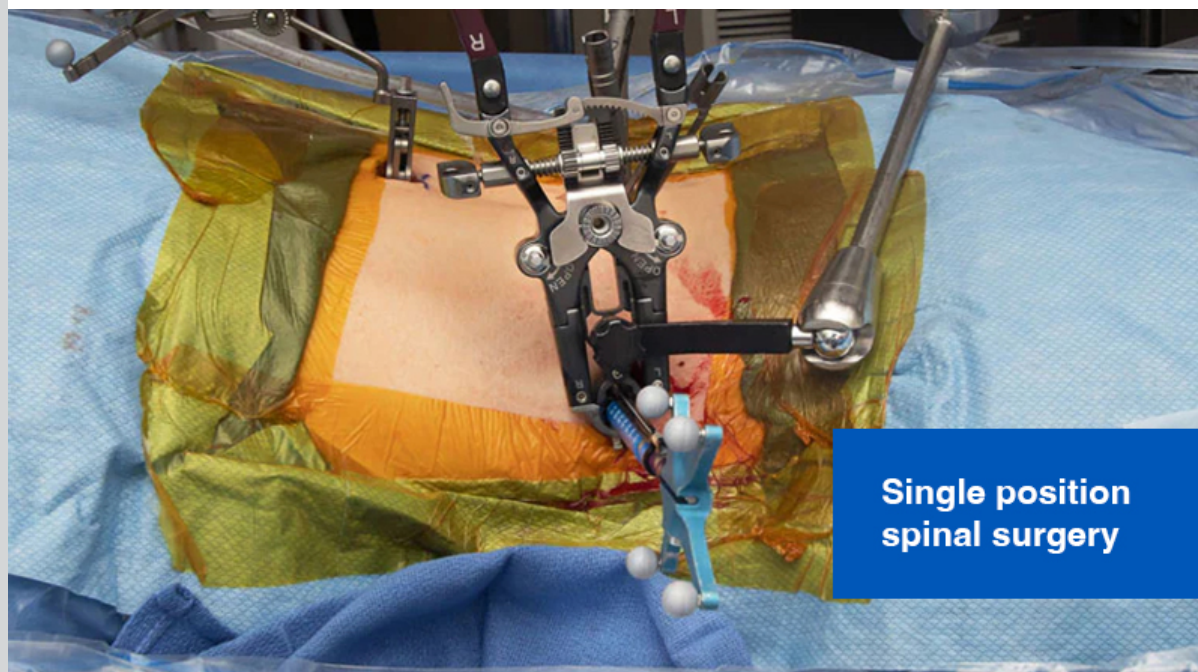
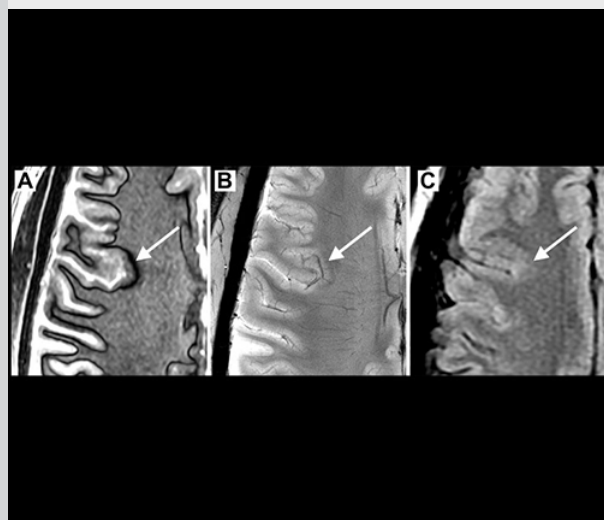


# Neurosciences Physician Update

November 2022



## Patient Care



### 7-T MRI provides detailed epilepsy assessments

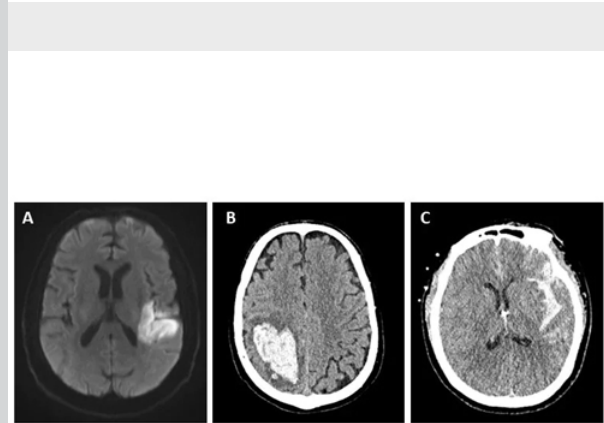
State-of-the-art MRI enhances Mayo Clinic's ability to localize seizure-origin sites. Pinpointing these sites is key to optimizing treatment for medication-refractory epilepsy.

[Learn more](#)

[See more Neurology and Neurosurgery news](#)

[View Neurology and Neurosurgery specialty videos and Grand Rounds presentations](#)

## Research



### Mayo Clinic brings strengths to NIH-funded stroke study

Mayo Clinic is a lead partner in a major study of post-stroke cognition in diverse populations. DISCOVERY draws on Mayo Clinic's expertise in multiple domains of neurology and imaging.

[Learn more](#)



### Research sheds light on neurodevelopmental syndrome

Mayo Clinic led an international team that found 15 additional genetic alterations associated with KCNK9 imprinting syndrome. Identifying the syndrome's root cause is key to finding a cure.

[Learn more](#)

[See all Neurology and Neurosurgery Clinical Trials at Mayo Clinic](#)

## Education

Mayo Clinic School of Continuous Professional Development offers [live courses](#), [livestreaming courses](#), [online continuing medical education \(CME\) courses](#) and [podcasts](#) to meet your CME needs.

[See all Neurology and Neurologic Surgery Continuing Medical Education courses](#)



### Mayo Clinic Electromyography (EMG), Electroencephalography (EEG), and Neurophysiology in Clinical Practice

Feb. 19-25, 2023  
Amelia Island, Fla. and Livestream

This course reviews techniques and topics relevant to clinical neurophysiology, including physiology and pathophysiology, EMG, EEG, evoked potentials, sleep, and intraoperative monitoring.

[Register Now](#)



### Clinical Autonomic Disorders: Case-Based and Laboratory Workshop

May 19-20, 2023  
Rochester, Minn.

This course focuses on autonomic function tests that have Current Procedural Terminology codes. Topics include underlying physiology, patient preparation, indications for autonomic testing and factors that affect test results.

[Register Now](#)

## COVID-19 Updates and Resources

[Read more](#)

## Consults and Referrals

Phoenix/Scottsdale, Arizona  
844-464-0050

Admission and Transfer Center (ATC) line for urgent/emergent referrals  
480-342-1155

Jacksonville, Florida  
844-275-1062

Admission and Transfer Center (ATC) line for urgent/emergent referrals  
904-717-0206

Rochester, Minnesota  
844-384-4982

Admission and Transfer Center (ATC) line for urgent/emergent referrals  
507-255-2910

Neurology  
507-405-0786

Neurosurgery  
507-405-0873

[Online Referrals](#)

## Resources

[Life-Changing Careers](#)

[Clinical Trials](#)

[Mayo Clinic School of Continuous Professional Development](#)



[Comments?](#)

We're interested in your feedback about this newsletter.

[Pass It On](#)

Invite a friend to subscribe.