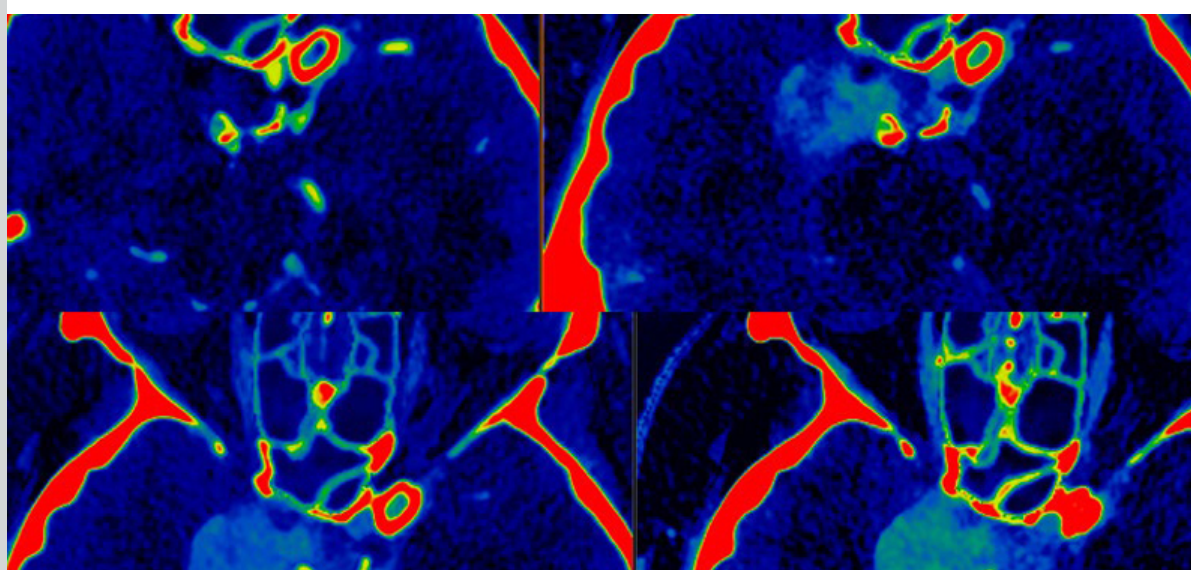


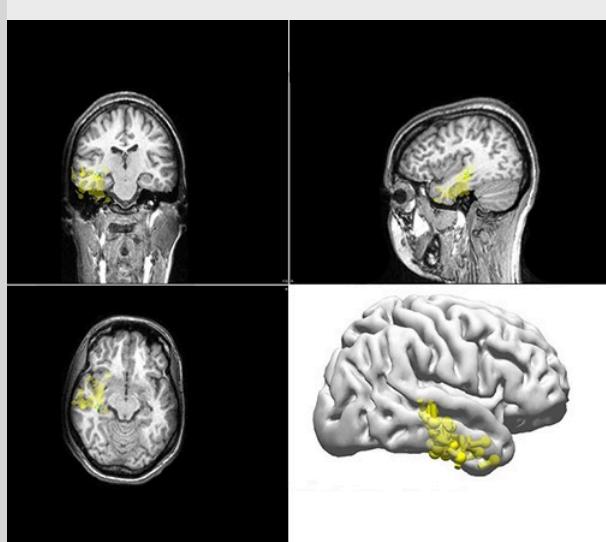
# Neurosciences Physician Update

January 2025



**READ** How to manage benign brain tumors

## Patient Care



### MEG helps verify seizure origin sites

The noninvasive test helps target locations for sEEG electrode placement. The highly detailed test results guide treatment options.

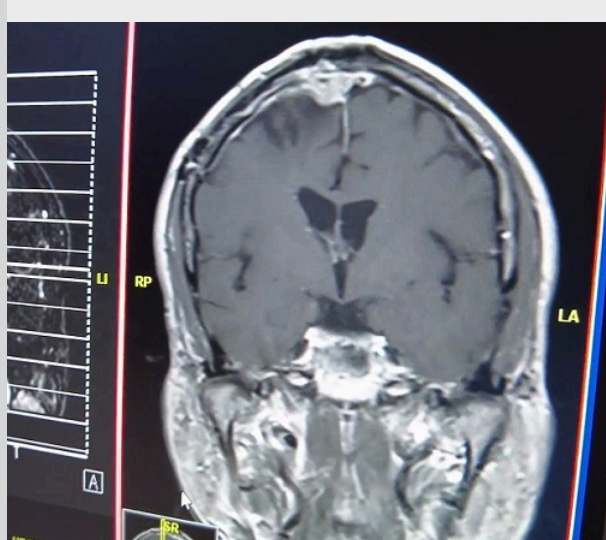
[Learn more](#)

[Refer a Patient](#)

[See more Neurology and Neurosurgery news](#)

[View Neurology and Neurosurgery specialty videos and Grand Rounds presentations](#)

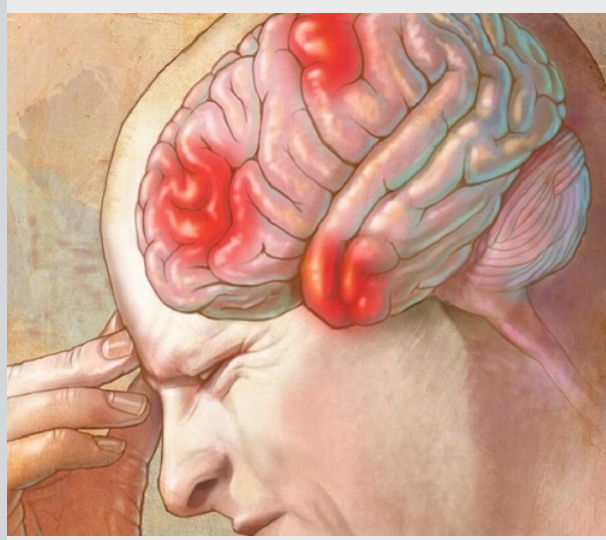
## Research



### Laboratory work explores molecular pathways of meningioma formation

Mayo Clinic research aims to translate genetic discoveries into new therapies for this common brain tumor.

[Learn more](#)



### AI models suggest precision migraine treatment is possible

Mayo Clinic researchers have developed tools that can potentially help ease the trial-and-error process of treating headaches.

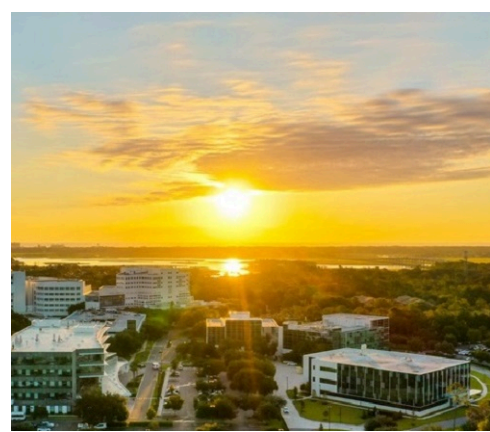
[Learn more](#)

[See all Neurology and Neurosurgery Clinical Trials at Mayo Clinic](#)

## Education

Mayo Clinic School of Continuous Professional Development offers [live courses](#), [livestreaming courses](#), [online continuing medical education \(CME\) courses](#) and [podcasts](#) to meet your CME needs.

[See all Neurology and Neurologic Surgery Continuing Medical Education courses](#)



**Mayo Clinic: Rhoton-de Oliveira Treatment Advances in Neurology and Functional Neurosurgery for Movement Disorders, Epilepsy & Headache 2025**  
March 6-8, 2025  
Jacksonville, Fla.

This course has neurosurgery and neurology tracks.

[Register Now](#)



**6th Annual Advances and Innovations in Neurosurgery**  
April 3-5, 2025  
Marana, Ariz., and Livestream

This course includes case-based discussions and workshops on advances in the care of complex neurosurgical pathologies.

[Register Now](#)

## Consults and Referrals

**Phoenix/Scottsdale, Arizona**  
866-629-6362

Admission and Transfer Center (ATC) line for urgent/emergent referrals  
480-342-1155

**Jacksonville, Florida**  
800-634-1417

Admission and Transfer Center (ATC) line for urgent/emergent referrals  
904-953-1111

**Rochester, Minnesota**  
800-533-1564

Admission and Transfer Center (ATC) line for urgent/emergent referrals  
507-255-2910

**Neurology**  
507-284-1588

**Neurosurgery**  
507-284-8008

[Online Referrals](#)

## Resources

[Life-Changing Careers](#)

[Clinical Trials](#)

[Mayo Clinic School of Continuous Professional Development](#)



[Comments?](#)

We're interested in your feedback about this newsletter.

[Pass It On](#)

Invite a friend to subscribe.

[MayoClinic.org](#) | [Newsletter Archive](#) | [Contact](#) | [Medical Professionals](#)