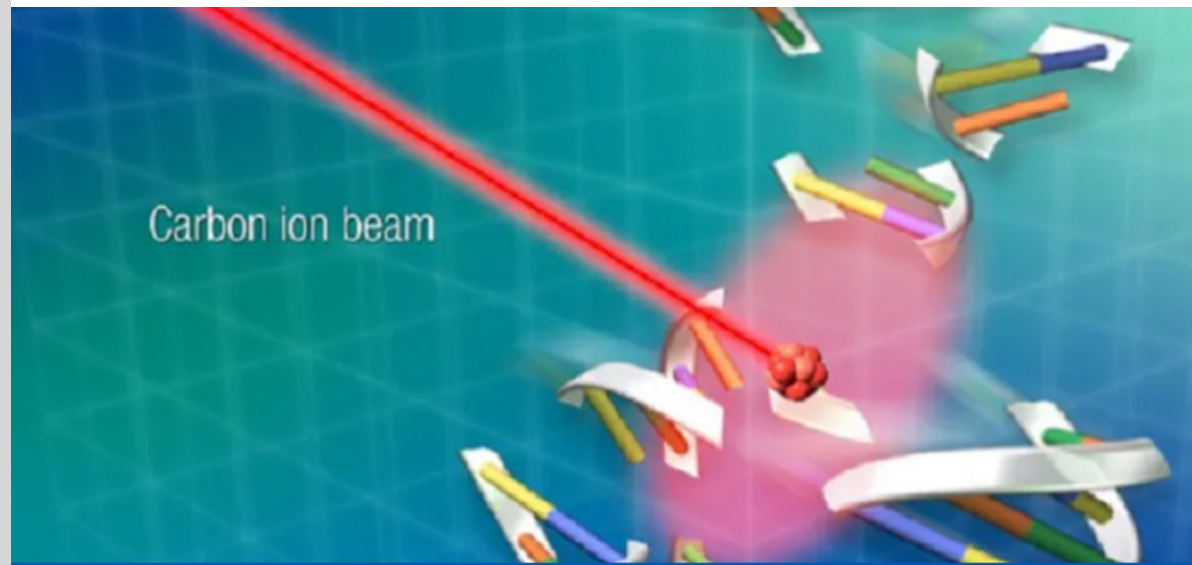


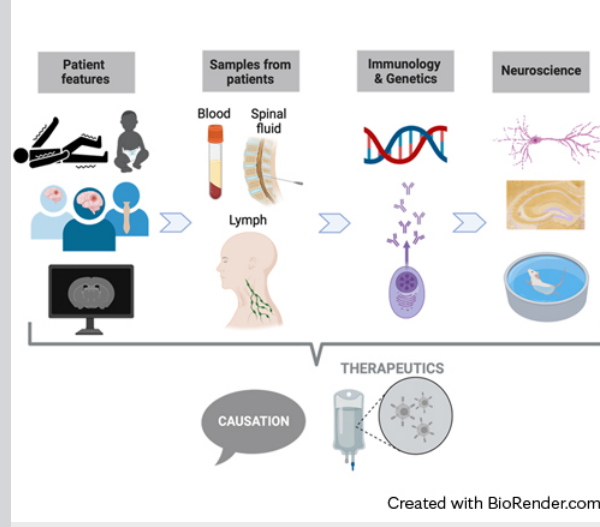
Neurosciences Physician Update

January 2024



Technology maximizes the safety and outcomes of neuro-oncological treatment

Patient Care



Sarosh R. Irani, B.M.B.Ch., joins Mayo Clinic

Mayo Clinic is augmenting its team of autoimmune neurology clinician-researchers. The move epitomizes Mayo Clinic's commitment to excellence in the field.

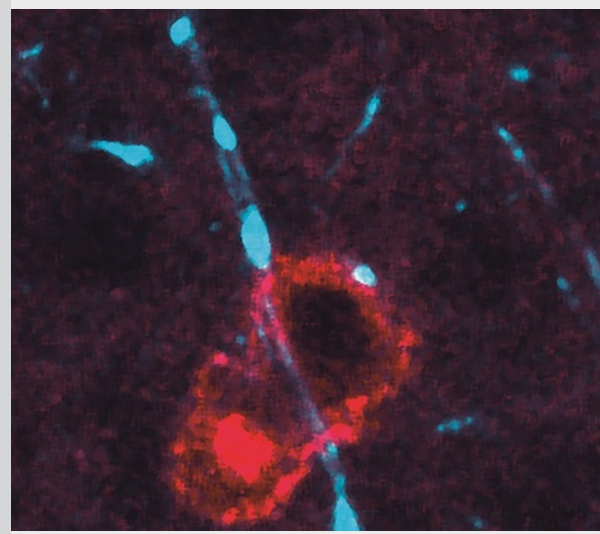
[Learn more](#)

Refer a Patient

[See more Neurology and Neurosurgery news](#)

[View Neurology and Neurosurgery specialty videos and Grand Rounds presentations](#)

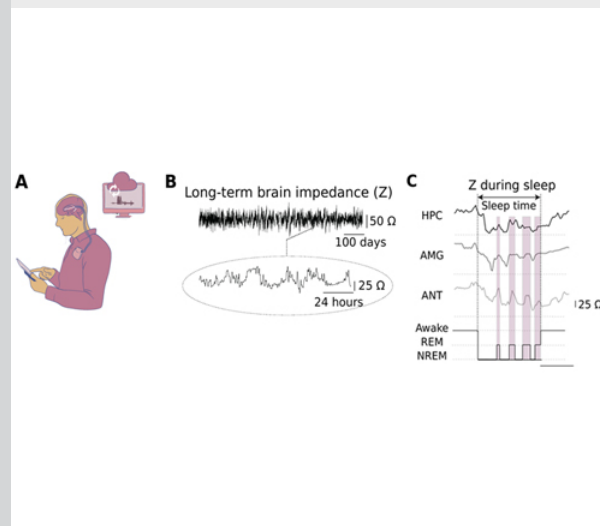
Research



Study finds possible explanation for MS progression

Mayo Clinic research describes the role of neuroantigen-specific T cells in promoting neuron loss in mouse models of multiple sclerosis.

[Learn more](#)



Research sheds light on fundamental electrical brain activity

The results of a Mayo Clinic study can potentially impact the forecasting of epileptic seizures. The study found that human brain impedance exhibits multiscale oscillations.

[Learn more](#)

[See all Neurology and Neurosurgery Clinical Trials at Mayo Clinic](#)

Education

Mayo Clinic School of Continuous Professional Development offers [live courses](#), [livestreaming courses](#), [online continuing medical education \(CME\) courses](#) and [podcasts](#) to meet your CME needs.

[See all Neurology and Neurologic Surgery Continuing Medical Education courses](#)



5th Annual Mayo Clinic Neurosurgery and Neurology Advances Update: Brain, Spine, and Peripheral Nerves
April 4-6, 2024
Scottsdale, Ariz., and Livestream

This course covers innovations in complex brain, spinal and peripheral nerve disorders.

[Register Now](#)



Multiple Sclerosis and Autoimmune Neurology Update Online Course
Course expires May 7, 2026

This state-of-the-art update provides evidence-based strategies that focus on practical, multidisciplinary clinical care.

[Register Now](#)

Consults and Referrals

Phoenix/Scottsdale, Arizona
866-629-6362

Admission and Transfer Center (ATC) line for urgent/emergent referrals
480-342-1155

Jacksonville, Florida
800-634-1417

Admission and Transfer Center (ATC) line for urgent/emergent referrals
904-953-1111

Rochester, Minnesota
800-533-1564

Admission and Transfer Center (ATC) line for urgent/emergent referrals
507-255-2910

Neurology
507-284-1588

Neurosurgery
507-284-8008

[Online Referrals](#)

Resources

[Life-Changing Careers](#)

[Clinical Trials](#)

[Mayo Clinic School of Continuous Professional Development](#)



[Comments?](#)

We're interested in your feedback about this newsletter.

[Pass It On](#)

Invite a friend to subscribe.