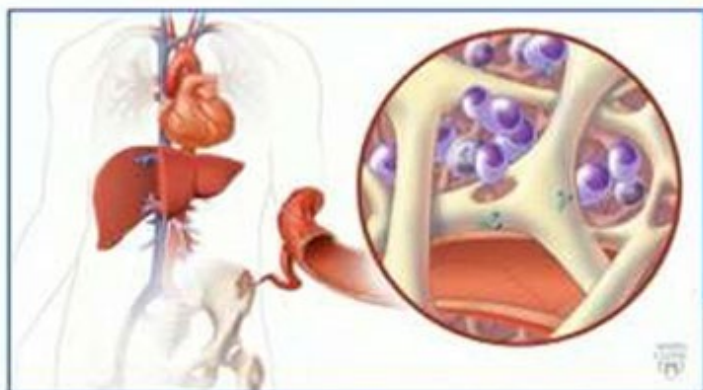
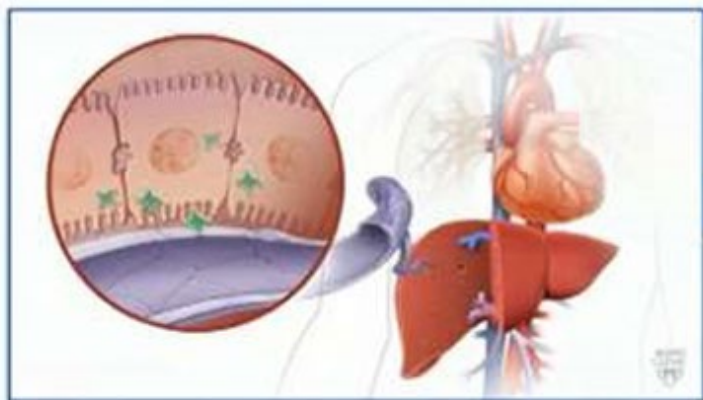


# Cardiovascular Physician Update

February 2022



Light Chain Amyloid  
Protein Factory  
Plasma Cells  
in Bone Marrow



**Transthyretin amyloid  
and new treatment options**



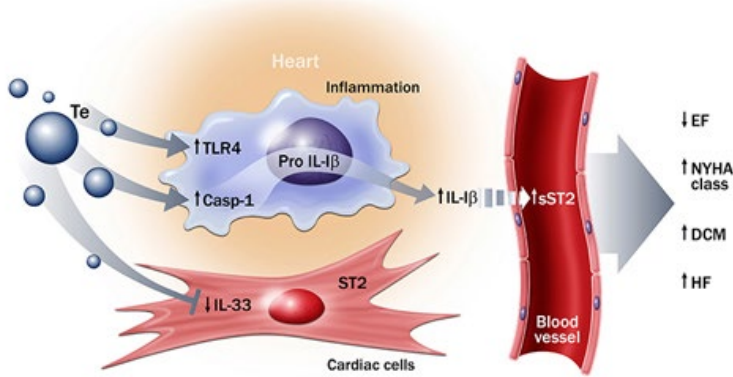
Transthyretin Amyloid  
Protein Factory  
Liver

Patient Care

## Video — Myocarditis: The great mimicker

Leslie T. Cooper, M.D., discusses the prevalence of myocarditis, which mimics many more-common diseases. Dr. Cooper explains when to consider a myocarditis diagnosis and outlines specific management strategies that can improve patient outcomes.

[Learn more](#)



[See more Cardiovascular Diseases news](#)

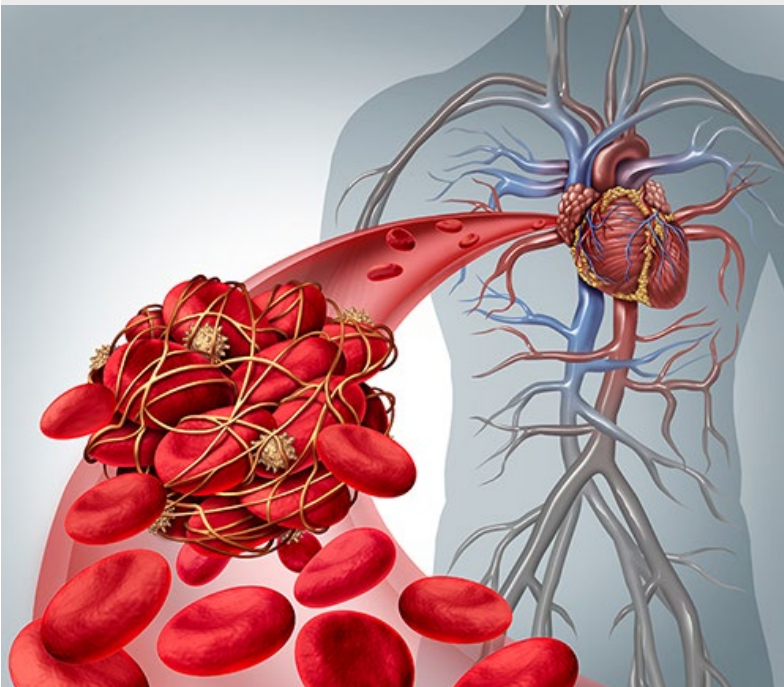
[View Cardiovascular Diseases specialty videos and Grand Rounds presentations](#)

## Research

## Video — Bioprosthetic valve thrombosis: A perhaps not-so-rare complication

Cardiologists Christopher V. DeSimone, M.D., Ph.D., and Sorin V. Pislaru, M.D., Ph.D., discuss thrombosis, how it contributes to valve failures and reoperations, and what can be done to avoid it.

[Learn more](#)





## **ICDs are not used as often for female patients and patients of color**

Data from the National Inpatient Sample administrative database of inpatient hospitalizations shows disparities regarding which patients with hypertrophic cardiomyopathy receive implantable cardioverter-defibrillator (ICD) therapy in the hospital.

[Learn more](#)

See all [Cardiovascular Medicine](#) and [Cardiovascular Surgery](#) Clinical Trials at Mayo Clinic

## Education

### **Cardiovascular Medicine Continuing Medical Education Offerings**

Mayo Clinic Cardiovascular Education offers learning opportunities to fit your busy lifestyle. Enjoy complimentary online videos and live webinars. Browse listings for in-person, livestream, online and complete board review courses and maximize your learning.



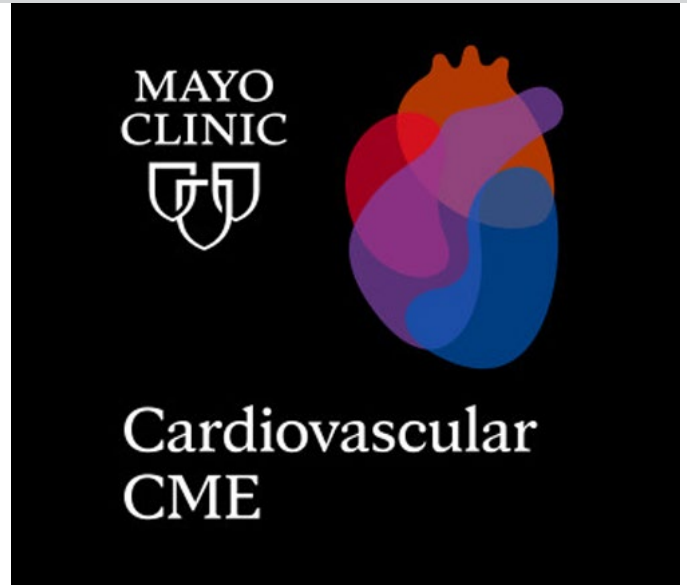
## Basic to Advanced Echocardiography | From the Blue Ridge Mountains of Asheville

May 11-14, 2022

Asheville, N.C., and Livestream

Topics include echocardiographic assessment of left and right ventricular function, plus disease states for which echocardiography is useful: ischemic heart disease, valvular heart disease, pericardial disease and cardiomyopathies.

[Register Now](#)



## Mayo Clinic Cardiovascular CME Podcast

In this complimentary series, Mayo Clinic specialists explore a multitude of today's most pressing topics in cardiology and provide valuable insights that can be directly applied to your practice.

[Listen to Podcasts](#)

## COVID-19 updates & resources

[Read more](#)

## Consults and Referrals

### Arizona, Florida and Minnesota

[Online Referrals](#)

[Cardiovascular Medicine](#)

### Rochester, Minnesota

[Pediatric Cardiology](#)

### Eau Claire, Wisconsin

[Cardiovascular Medicine and Surgery](#)

# Resources

[Life-Changing Careers](#)

[Clinical Trials](#)

[Mayo Clinic School of Continuous Professional Development](#)



---

**the heart.org** Medscape Cardiology

[Check us out on Medscape Cardiology](#)

Mayo Clinic joins forces with Medscape Cardiology to bring you the latest perspective on clinical trials, patient care and news.

[Comments?](#)

We're interested in your feedback about this newsletter.

[Pass It On!](#)

Invite a friend to subscribe.

[MayoClinic.org](#) | [Newsletter Archive](#) | [Contact](#) | [Medical Professionals](#)

---