

Cardiovascular Diseases & Cardiac Surgery Physician Update

September 2023



Impact of time to chest closure on the survival of patients with delayed sternal closure



Patient Care



When to refer for specialty care: Advanced heart failure complexities

Daniel S. Yip, M.D., a Mayo Clinic transplant cardiologist, responds to questions about pinpointing heart failure status and when to consider referral for advanced heart failure care.

[Learn more](#)

[Refer a Patient](#)

[See more Cardiovascular Diseases and Cardiac Surgery news](#)

[View Cardiovascular Diseases and Cardiac Surgery specialty videos and Grand Rounds presentations](#)

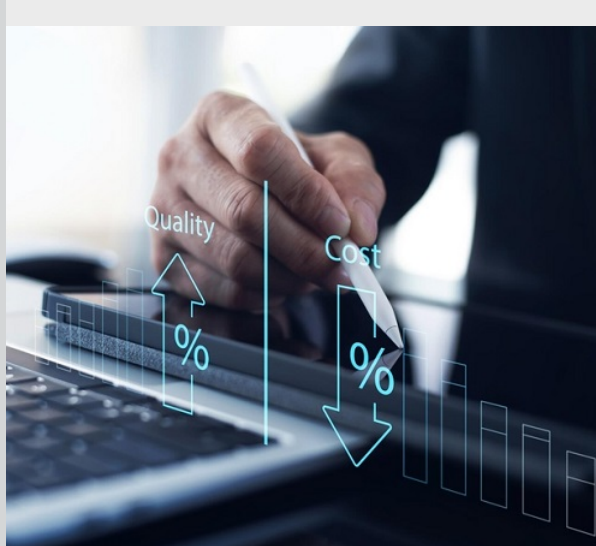
Research



Are anticoagulation guidelines followed after bioprosthetic surgical aortic valve replacement?

Guideline-directed medication adherence is an important quality measure after cardiac surgery. Mayo Clinic researchers evaluated compliance with American College of Cardiology/American Heart Association guidelines for warfarin use after surgical aortic valve replacement (SAVR).

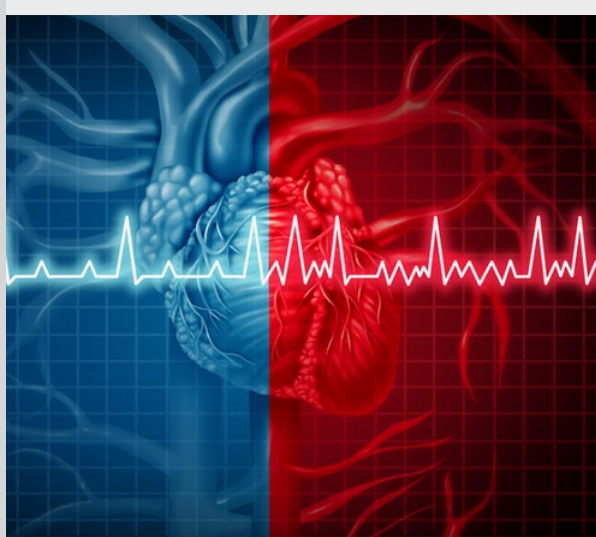
[Learn more](#)



Coronary reactivity assessment is associated with lower healthcare

The financial burden of the diagnosis and treatment of chest pain on the healthcare system is considerable. A Mayo Clinic study assessed how coronary reactivity testing affects healthcare costs in patients with angina and nonobstructive coronary artery disease.

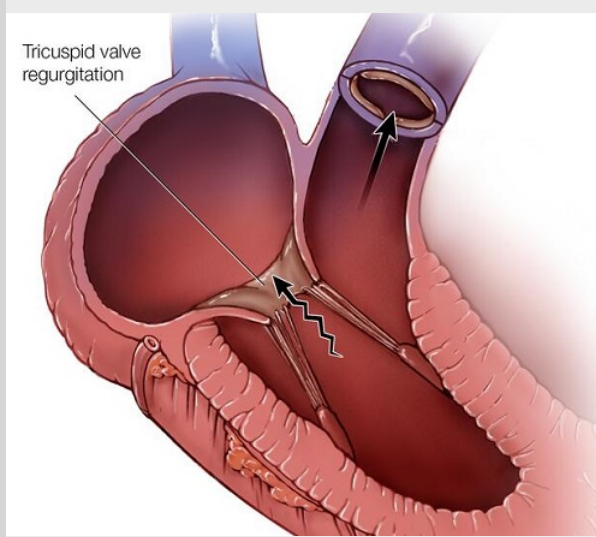
[Learn more](#)



Impact of atrial fibrillation on outcomes in very severe aortic valve stenosis

The prevalence and impact of atrial fibrillation (AF) versus sinus rhythm on outcomes in very severe aortic stenosis (vsAS) of the native valve is unknown. A Mayo Clinic study examined prognostic significance of AF in vsAS.

[Learn more](#)



Patients with atrial fibrillation: Incidence and burden of tricuspid regurgitation

Atrial fibrillation (AF) is a risk factor for isolated tricuspid valve regurgitation (TR) in absence of other known etiologies. A Mayo Clinic study examined incidence and impact of clinically significant isolated TR in AF.

[Learn more](#)

[See all Cardiovascular Medicine and Cardiovascular Surgery Clinical Trials at Mayo Clinic](#)

Education

Cardiovascular Medicine Continuing Medical Education Offerings

Mayo Clinic Cardiovascular Education offers learning opportunities to fit your busy lifestyle. Enjoy complimentary online videos and live webinars. Browse listings for in-person, livestream, online and complete board review courses and maximize your learning.



Cardiovascular CME Podcast



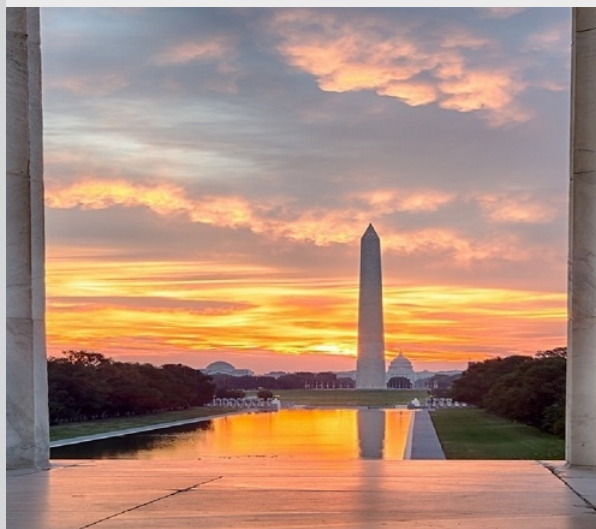
Free Video Center



Destination + Livestream Courses



Cardiovascular CME App



Contemporary Review of Advances in Cardiac Ablation: New Tips, Techniques, and Technologies for Complex Arrhythmia Management

October 18-21, 2023 Washington, D.C., and Livestream

Review new approaches for complex arrhythmia management with case-based discussions highlighting diagnostic dilemmas and key management strategies presented by Mayo Clinic experts.

[Register Now](#)

Consults and Referrals

Arizona, Florida and Minnesota Online Referrals

[Cardiovascular Medicine](#)

[Cardiovascular Surgery](#)

Rochester, Minnesota Pediatric Cardiology

[Mayo Clinic Health System](#)

Community care in Minnesota, Wisconsin and Iowa

Resources

[Life-Changing Careers](#)

[Clinical Trials](#)

[Mayo Clinic School of Continuous Professional Development](#)



[theHeart.org](#) Medscape Cardiology

[Check us out on Medscape Cardiology](#)

Mayo Clinic joins forces with Medscape Cardiology to bring you the latest perspective on clinical trials, patient care and news.

[Comments?](#)

We're interested in your feedback about this newsletter.

[Pass It On](#)

Invite a friend to subscribe.