

Cancer Physician Update

September 2023



Best evidence science translation (BEST) for cancer care

Patient Care



A collaborative approach to cancer-related kidney care

Advancements in cancer treatment have illuminated the need to understand the short- and long-term impacts on patients' kidneys. The emerging field of onconeurology provides a more comprehensive approach to cancer care.

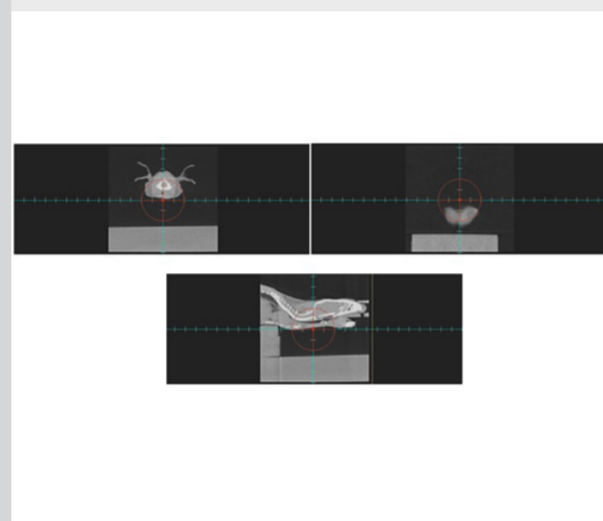
[Learn more](#)

[Refer a Patient](#)

[See more Cancer news](#)

[View Cancer specialty videos and Grand Rounds presentations](#)

Research



Testing salivary stem cell transplants with a standardized model

Radiation-induced hyposalivation is one of the most challenging side effects for patients with head and neck cancer. Mayo Clinic researchers have developed a preclinical, murine model to test salivary stem cell transplants.

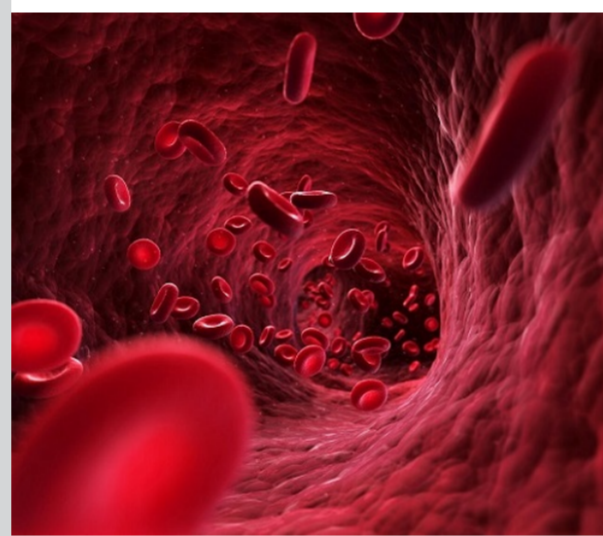
[Learn more](#)

[See all Cancer Clinical Trials at Mayo Clinic](#)

Education

Mayo Clinic School of Continuous Professional Development offers [live courses](#), [livestreaming courses](#), [online continuing medical education \(CME\) courses](#) and [podcasts](#) to meet your CME needs.

[See all Hematology and Oncology Continuing Medical Education courses](#)

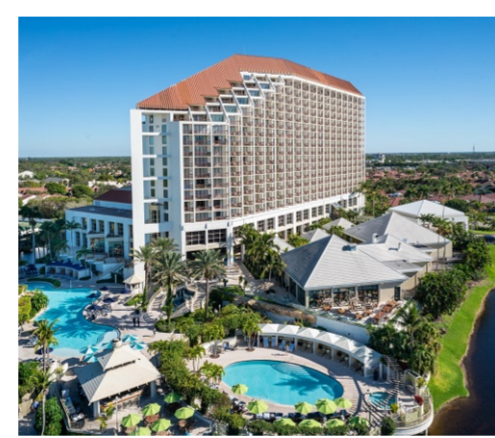


The How and the Why: Arizona Hematology Oncology Course 2023

Oct. 14, 2023
Phoenix and Livestream

This CME conference features lectures, presentations and group discussions for advanced practice providers, physician assistants, nurse practitioners and nurses who care for patients with hematologic and oncologic malignancies.

[Register Now](#)



Multidisciplinary Update in Breast Disease 2023

Nov. 9-11, 2023
Naples, Fla., and Livestream

Multidisciplinary experts provide attendees with an update in prevention, evaluation, diagnosis, management and treatment of breast diseases, as well as high-risk and survivorship issues.

[Register Now](#)



Mayo Clinic Hepato-Pancreatico-Biliary Cancer Symposium 2023

Nov. 10-11, 2023
Las Vegas and Livestream

Attendees receive a multidisciplinary overview on the importance of early diagnosis and treatment considerations from national and international experts in the management of hepato-pancreatico-biliary cancers.

[Register Now](#)

Consults and Referrals

Phoenix/Scottsdale, Arizona
866-629-6362

Jacksonville, Florida
800-634-1417

Rochester, Minnesota
800-533-1564

[Online Referrals](#)

Resources

[Life-Changing Careers](#)

[Clinical Trials](#)

[Mayo Clinic School of Continuous Professional Development](#)



Comments?
We're interested in your feedback about this newsletter.

Pass It On
Invite a friend to subscribe.