

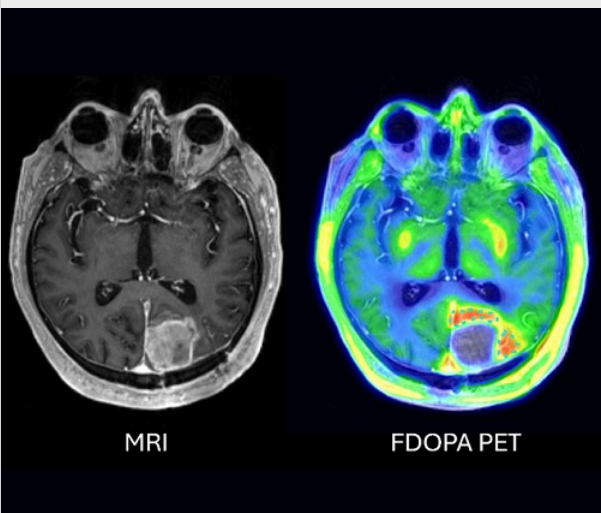
Cancer Physician Update

November 2024



READ Best practices for overcoming disparities with community-engaged research

Patient Care



Providing window of opportunity trials for patients with glioma

Mayo Clinic researchers are using new approaches to therapeutic studies for glioma. The goal is to speed the development of treatments that can prevent disease recurrence.

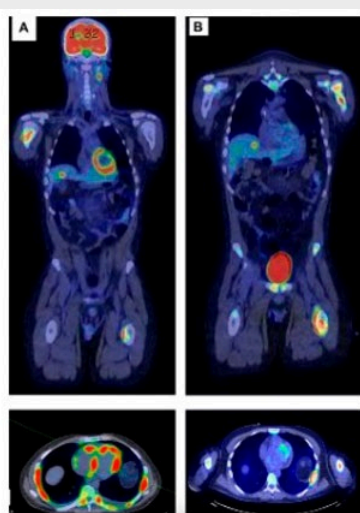
[Learn more](#)

[Refer a Patient](#)

[See more Cancer news](#)

[View Cancer specialty videos and Grand Rounds presentations](#)

Research



CAR-T cell therapy provides options for patients with lymphoma and cardiomyopathy or cardiac metastasis

Mayo Clinic cardio-oncologists describe using CAR-T cell therapy with patients historically excluded from the therapy in clinical trials. The case report was published in JACC.

[Learn more](#)

Education

Mayo Clinic School of Continuous Professional Development offers live courses, livestreaming courses, online continuing medical education (CME) courses and podcasts to meet your CME needs.

[See all Hematology and Oncology Continuing Medical Education courses](#)



Leading the Way in Lung Cancer Treatment: Multidisciplinary and AI-Driven Approaches for Lung Cancer

Nov. 20, 2024
Livestream Webinar

Mayo Clinic experts highlight a multidisciplinary approach for stage 3 lung cancer and how to care for patients with early-stage disease using AI and a single-stage approach.

[Register Now](#)



Hematology & Medical Oncology Practice Updates and Board Review 2025

Feb. 3-7, 2025
Kapalua, Hawaii, and Livestream

Attendees receive up-to-date, practical information and best practices that can be applied immediately into daily clinical practice.

[Register Now](#)



Clinical Multidisciplinary Hematology & Oncology: The 19th Annual Review - 2025

March 12-15, 2025
Scottsdale, Ariz., and Livestream

This course offers a comprehensive update on the diagnosis and management of hematology and oncology diseases. Presentations focus on new data and best practices for physicians and the healthcare team.

[Register Now](#)

Consults and Referrals

Phoenix/Scottsdale, Arizona
866-629-6362

Jacksonville, Florida
800-634-1417

Rochester, Minnesota
800-533-1564

[Online Referrals](#)

Resources

[Life-Changing Careers](#)

[Clinical Trials](#)

[Mayo Clinic School of Continuous Professional Development](#)



Comments?

We're interested in your feedback about this newsletter.

Pass It On

Invite a friend to subscribe.

[MayoClinic.org](#) | [Newsletter Archive](#) | [Contact](#) | [Medical Professionals](#)