

Cancer Physician Update

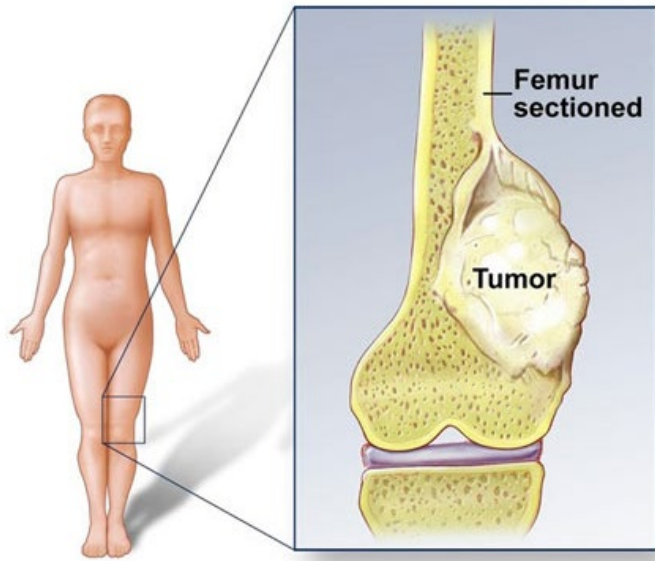
May 2022

Addressing the
rehabilitation
needs of people
with cancer



© MAYO CLINIC

Patient Care



Socioeconomic factors associated with higher risk of amputation in bone sarcoma

A 2021 study found socioeconomic factors to be associated with higher risk of amputation in patients with bone sarcomas. This disparity was evident regardless of health insurance status.

[Learn more](#)

[See more Cancer news](#)

[View Cancer specialty videos and Grand Rounds presentations](#)

Research



Colorectal cancer predisposition found outside of national detection guidelines

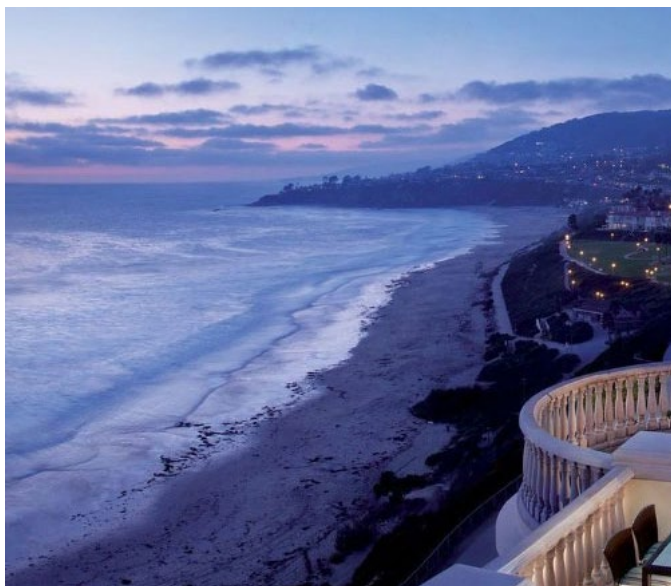
A prospective, multisite study found 1 in 6 patients with colorectal cancer had a germline predisposition and more than half of those would not have been detected following national guidelines.

[Learn more](#)

Education

Mayo Clinic School of Continuous Professional Development offers [live courses](#), [livestreaming courses](#), [online continuing medical education \(CME\) courses](#) and [podcasts](#) to meet your CME needs. Medical education from Mayo Clinic experts is also available through [GIBLIB](#), a new on-demand medical education library.

[See all Hematology and Oncology Continuing Medical Education courses](#)

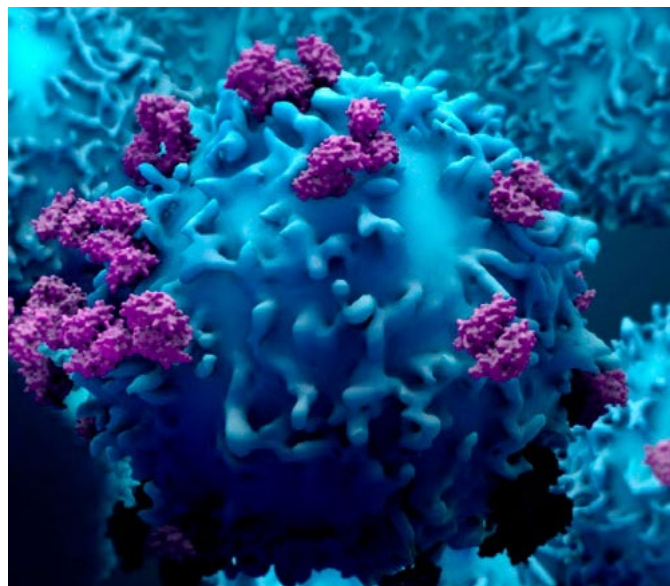


Mayo Clinic Diagnostic Imaging Update and Self-Assessment 2022

July 11-15, 2022
Dana Point, Calif.

Practicing radiologists, residents and fellows-in-training review state-of-the-art imaging techniques. This training includes "focused days" to address abdominal, nuclear medicine, physics and more specialty topic areas.

[Register Now](#)



2022 Mayo Clinic Oncology Review

July 16, 2022
Minneapolis and Livestream

This one-day CME course draws on abstracts presented at the June 2022 annual meeting of the American Society of Clinical Oncology to provide an overview of the most recent advances in treatment of oncologic malignancies.

[Register Now](#)

COVID-19 Updates and Resources

[Read more](#)

Consults and Referrals

Phoenix/Scottsdale, Arizona

877-673-2739

Jacksonville, Florida

855-375-9686

Rochester, Minnesota

855-995-1503

[Online Referrals](#)

Resources

[Life-Changing Careers](#)

[Clinical Trials](#)

[Mayo Clinic School of Continuous Professional Development](#)



Comments?

We're interested in your feedback about this newsletter.

Pass It On

Invite a friend to subscribe.