

Cancer Physician Update

January 2024



Breast-conserving surgery for multiple ipsilateral breast cancer

Patient Care



Multidisciplinary care and specialized training for rectal cancer

Colorectal cancer surgeons at Mayo Clinic are advancing treatment options by using multidisciplinary teams subspecialized to complex cancers. These teams advance care options and research for recurrent rectal cancer.

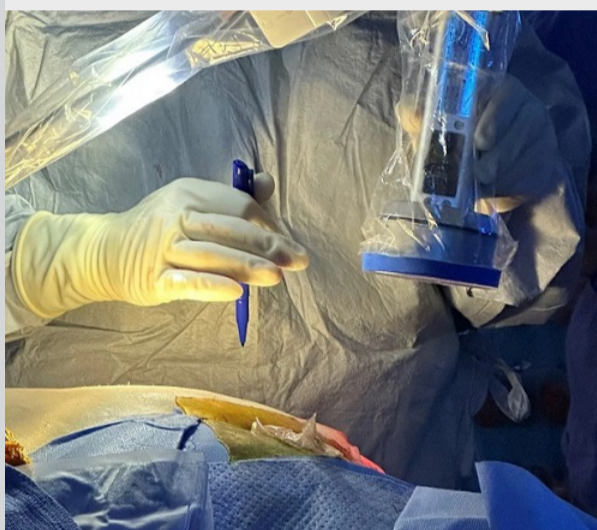
[Learn more](#)

[Refer a Patient](#)

[See more Cancer news](#)

[View Cancer specialty videos and Grand Rounds presentations](#)

Research



ICG fluorescence angiography useful to predict and prevent soft tissue sarcoma treatment-related wound complications

Soft tissue sarcoma radiation therapy plus surgery leads to wound complications in more than 30% of patients. Investigators have discovered how to predict and prevent these complications.

[Learn more](#)

[See all Cancer Clinical Trials at Mayo Clinic](#)

Education

Mayo Clinic School of Continuous Professional Development offers live courses, livestreaming courses, online continuing medical education (CME) courses and podcasts to meet your CME needs.

[See all Hematology and Oncology Continuing Medical Education courses](#)



2024 DONNA Education Event: Hope and Wellness

Feb. 3, 2024
Jacksonville, Fla., and Livestream

This one-day event provides attendees with information and education about tests and biomarkers for personalized breast cancer care, as well as innovative treatment options, screening modalities and clinical trials.

[Register Now](#)



Mayo Clinic Practical Integrative Medicine: Renew, Rejuvenate, Inspire & Connect 2024

March 7-9, 2024
Orlando, Fla., and Livestream

Attendees access diverse content from leaders in integrative medicine. The course covers the evidence behind various modalities and their implementation into clinical practice.

[Register Now](#)



Mayo Clinic Gastrointestinal Cancers 2024

March 14-16, 2024
Maui, Hawaii

Experts in the treatment of the whole spectrum of GI cancers guide attendees in integrating the best and most current evidence into their care for patients with GI cancers.

[Register Now](#)

Consults and Referrals

Phoenix/Scottsdale, Arizona
866-629-6362

Jacksonville, Florida
800-634-1417

Rochester, Minnesota
800-533-1564

[Online Referrals](#)

Resources

[Life-Changing Careers](#)

[Clinical Trials](#)

[Mayo Clinic School of Continuous Professional Development](#)



Comments?

We're interested in your feedback about this newsletter.

Pass It On

[Invite a friend to subscribe.](#)