

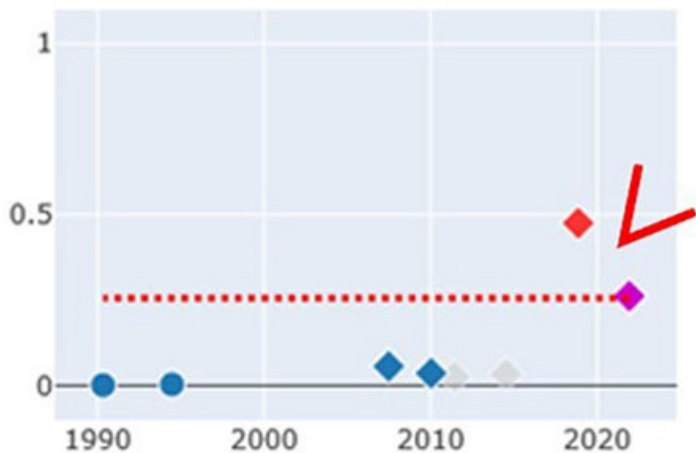


Endocrinology Physician Update

February 2022

Patient Care

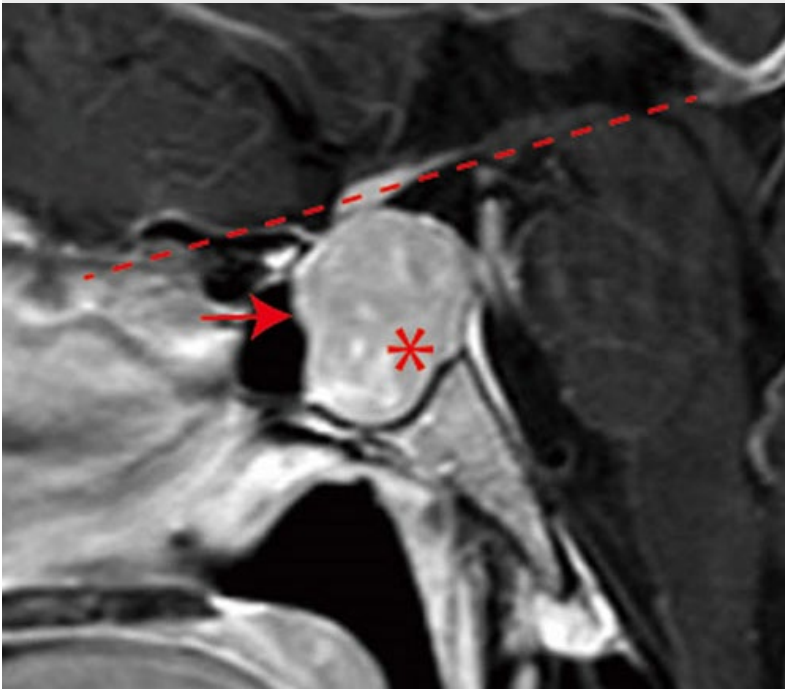
Probability of Low EF



AI-enabled electrocardi-ograms identify Graves'-associated risk factors for AF, heart failure

Artificial intelligence (AI) helps identify patients with Graves' disease who are at increased risk of developing atrial fibrillation (AF) and heart failure and who may benefit from closer surveillance.

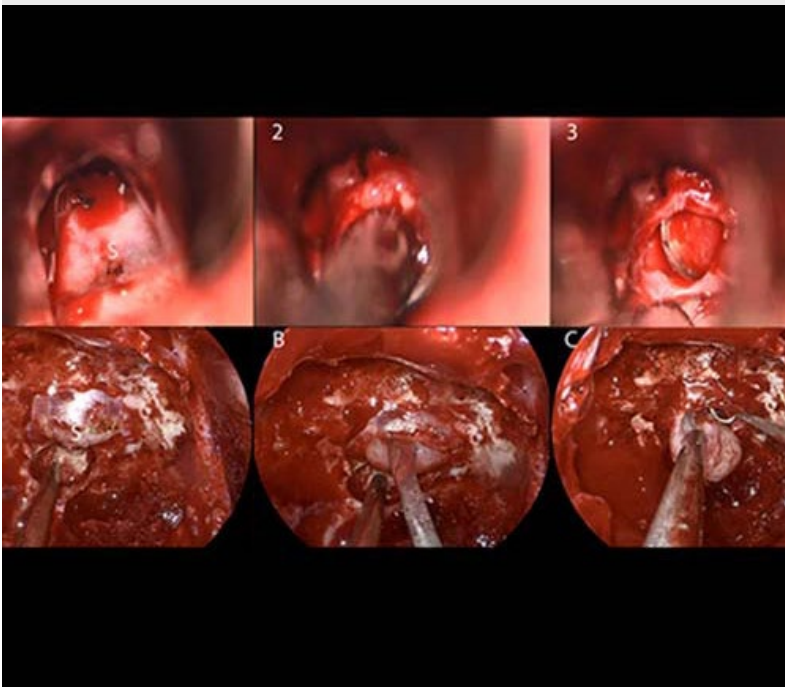
[Learn more](#)



Study evaluates optimal evaluation and treatment strategy for SCO of the pituitary gland

Spindle cell oncocytoma (SCO) is challenging to diagnose preoperatively. Mayo Clinic researchers have identified clinical, radiographic and pathological features of SCO and possible treatment strategies.

[Learn more](#)



Approximately 82% of patients go home the day after pituitary tumor surgery

A Mayo Clinic study documented fewer surgical complications and shorter hospital stays for individuals having pituitary tumor surgery at Mayo compared with results from a multicenter study.

[Learn more](#)

[See more Endocrinology news](#)

[View Endocrinology specialty videos and Grand Rounds presentations](#)



Black involvement in clinical trials advances health equity

Black patients and families are often reluctant to participate in clinical trials. A Mayo Clinic Community Engagement in Research Advisory Board member discusses the importance and benefits of Black participation.

[Learn more](#)



Health strategist promotes the value of clinical trials to address health disparities

A community leader in Minneapolis and longtime Mayo Clinic research collaborator shares his thoughts and experiences on the importance of community-engaged research and clinical trials.

[Learn more](#)

[See all Endocrinology Clinical Trials at Mayo Clinic](#)

Education

Mayo Clinic School of Continuous Professional Development offers [live courses](#), [livestreaming courses](#), [online continuing medical education \(CME\) courses](#) and [podcasts](#) to meet your CME needs. Medical education from Mayo Clinic experts is also available through [GIBLIB](#), a new on-demand medical education library.

[See all Endocrinology Continuing Medical Education courses](#)



Principles in the Care of Transgender and Intersex Patients 2022

Oct. 13-15, 2022

Phoenix and Livestream

Experts from Mayo Clinic's Transgender and Intersex Specialty Care Clinic discuss medical, surgical, psychosocial, legal and ethical issues facing this population to help attendees provide gender-affirming care to patients.

[Register Now](#)

22nd Annual Nutrition and Wellness in Health and Disease

Oct. 16-18, 2022

Coronado, Calif., and Livestream

Healthy lifestyle behaviors are vital components in the promotion of health and treatment of disease. This program highlights ambulatory nutrition and wellness topics via a multidisciplinary faculty.

[Register Now](#)

COVID-19 updates & resources

[Read more](#)

Consults and Referrals

Phoenix/Scottsdale, Arizona

866-629-6362

Jacksonville, Florida

800-634-1417

Rochester, Minnesota

800-533-1564

Online Referrals

Resources

[Life-Changing Careers: Physicians & Scientists](#)

[Clinical Trials](#)

[Mayo Clinic School of Continuous Professional Development](#)



Comments?

We're interested in your feedback about this newsletter.

Pass It On!

Invite a friend to subscribe.