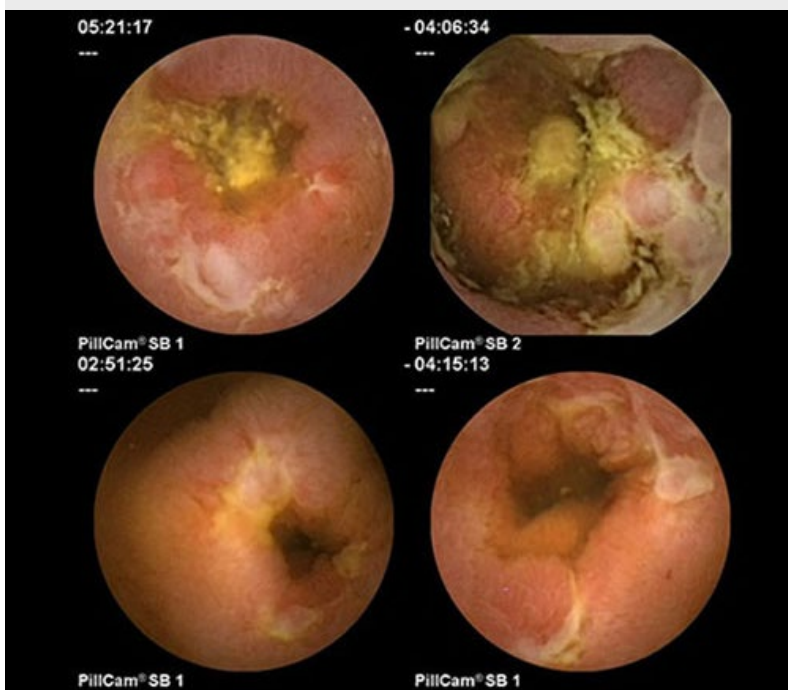




Digestive Diseases Physician Update

May 2022

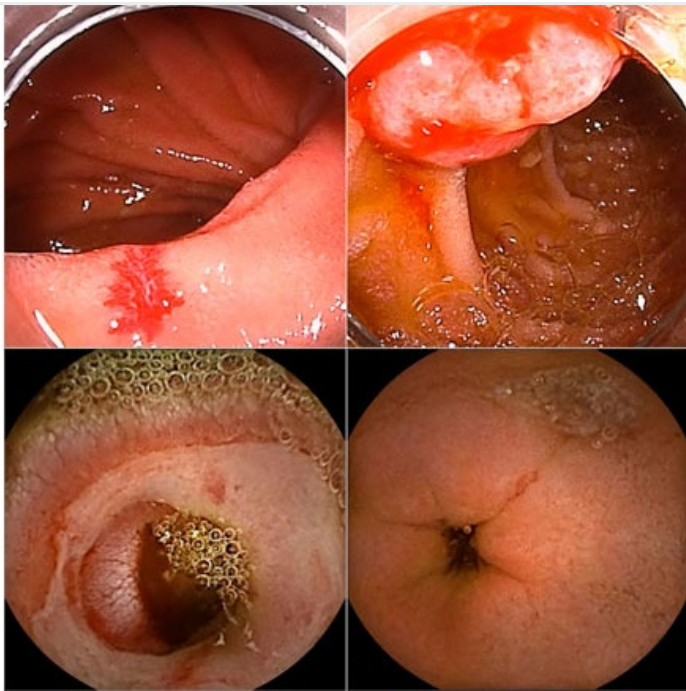
Patient Care



Capsule endoscopy emerging as effective tool for diagnosis and management of IBD

Mayo Clinic gastroenterologists discuss the indications, strengths and limitations of CE in the diagnosis and management of IBD.

[Learn more](#)



Stepwise approach useful in evaluating and treating small bowel bleeding

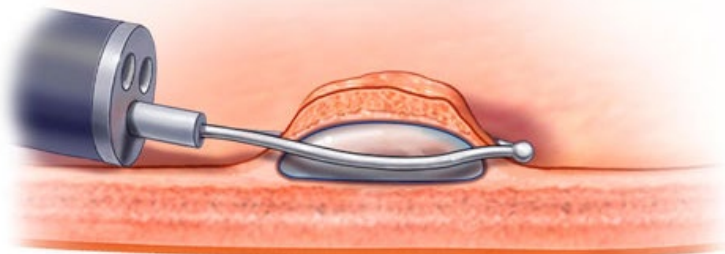
Mayo Clinic gastroenterologists discuss the various etiologies of small bowel bleeding and a stepwise guide for diagnosing and managing this condition.

[Learn more](#)

[See more Digestive Diseases news](#)

[View Digestive Diseases specialty videos and Grand Rounds presentations](#)

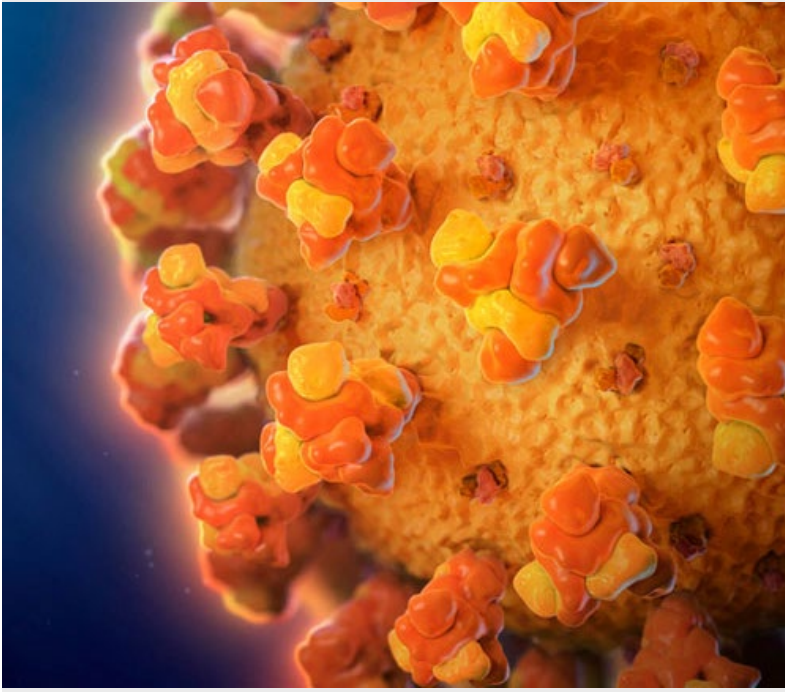
Research



Prophylactic clip closure can reduce risk of bleeding after EMR for some large lesions

In this Q&A, Mayo Clinic gastroenterologist Norio Fukami, M.D., discusses the role of prophylactic clip placement in reducing clinically significant post-EMR bleeding.

[Learn more](#)



Researchers examine efficacy of COVID-19 vaccines in individuals with inflammatory bowel disease

Studies explore vaccine efficacy, antibody response and other outcomes in individuals with inflammatory bowel disease and patients receiving immune-modifying therapies.

[Learn more](#)



Researchers develop tool to assess factors shaping clinician beliefs and behaviors surrounding average-risk colorectal cancer screening strategies

Using a web-based survey, researchers sought to identify the barriers and facilitators of clinical adoption of colorectal cancer screening strategies.

[Learn more](#)

[See all Gastroenterology and Hepatology Clinical Trials at Mayo Clinic](#)

Education

Mayo Clinic School of Continuous Professional Development offers [live courses](#), [livestreaming courses](#), [online](#)

continuing medical education (CME) courses and podcasts to meet your CME needs. Medical education from Mayo Clinic experts is also available through GIBLIB, a new on-demand medical education library.

[See all Gastroenterology Continuing Medical Education courses](#)



Gastroenterology & Hepatology Board Review 2022

Sept. 8-11, 2022

Chicago and Livestream

This comprehensive review helps prepare candidates for the initial and maintenance of certification examinations. It includes case-based content provided by Mayo Clinic faculty who deliver up-to-date, practical information.

[Register Now](#)



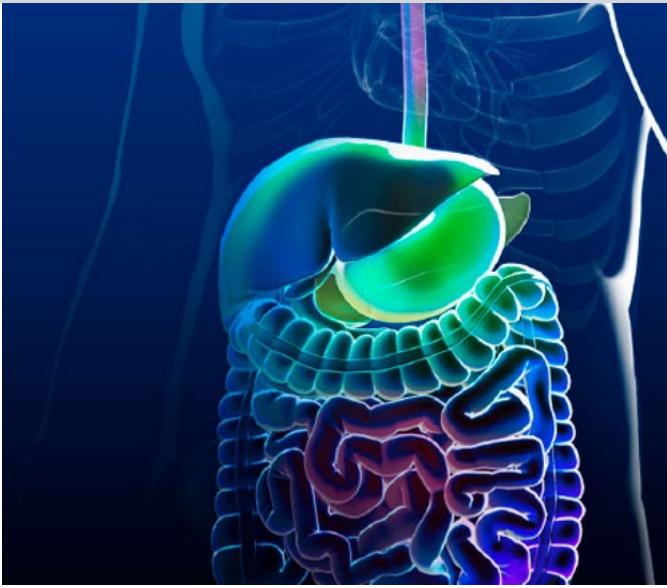
Mayo Clinic Women in Gastroenterology & Hepatology Showcase: If you cannot see it, you cannot be it! 2022 – LIVESTREAM

Sept. 16, 2022

Livestream

Nationally and internationally recognized women in gastroenterology and hepatology discuss clinical care, education, clinical-basic science research and professional development knowledge.

[Register Now](#)



8th Annual Gastroenterology & Hepatology Update with Interactive Live Endoscopy — 2022

Sept. 30-Oct. 1, 2022
Phoenix and Livestream

Course faculty members discuss common disorders — including polyps, IBS, celiac disease, esophageal conditions, gallstones, bile duct stones, hepatocellular carcinoma, hepatitis B and fatty liver disease — and GI endoscopy.

[Register Now](#)



Mayo Clinic Hepato-Pancreatico-Biliary Cancer Symposium 2022

Oct 21-22, 2022
Las Vegas and Livestream

This update describes the latest treatment options for patients with hepato-pancreatico-biliary cancers, including surgery, radiation, locoregional approaches and systemic therapies.

[Register Now](#)

COVID-19 Updates and Resources

[Read more](#)

Consults and Referrals

Phoenix/Scottsdale, Arizona

844-779-5824

Jacksonville, Florida

844-529-7563

Rochester, Minnesota

844-561-0880

Mayo Clinic Health System

855-392-8400

Online Referrals

Resources

[Life-Changing Careers](#)

[Clinical Trials](#)

[Mayo Clinic School of Continuous Professional Development](#)



[Comments?](#)

We're interested in your feedback about this newsletter.

[Pass it on!](#)

Invite a friend to subscribe.

[MayoClinic.org](#) | [Newsletter Archive](#) | [Contact](#) | [Medical Professionals](#)
