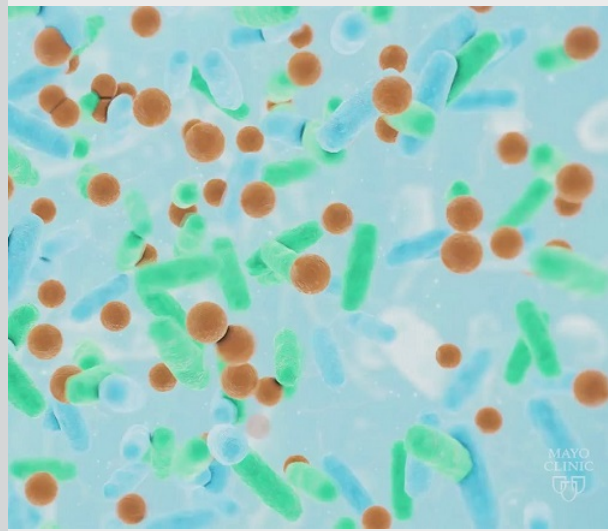


## Digestive Diseases Physician Update

March 2023

### Patient Care



#### Video: Inflammatory Bowel Disease Clinic targets personalized therapies

Laura E. Raffals, M.D., a gastroenterologist at Mayo Clinic in Rochester, Minnesota, discusses the diagnostic tools and individualized approaches that she and her colleagues use in the management of inflammatory bowel disease.

[Learn more](#)

[See more Digestive Diseases news](#)

[View Digestive Diseases specialty videos and Grand Rounds presentations](#)

### Research



#### Mayo Clinic-led clinical trial compares endoscopic sleeve gastroplasty (ESG) with lifestyle changes

Study results suggest that ESG can lead to greater weight loss, while preserving gastric motility and favorable changes in gastric emptying and obesity-related hormones.

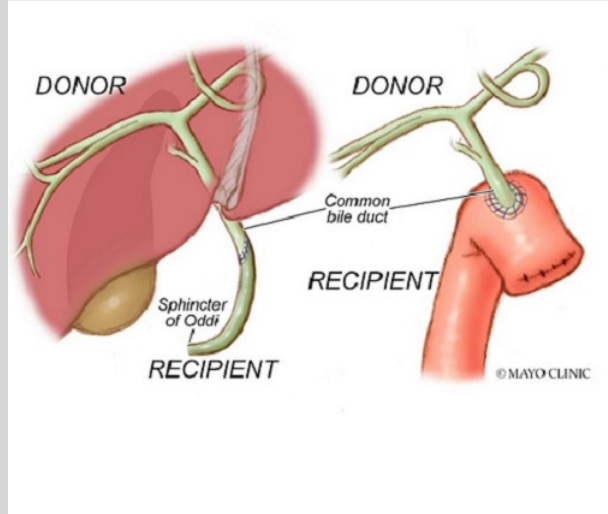
[Learn more](#)



#### Researchers examine the use of antispasmodics for treating chronic abdominal pain

The antispasmodics studied varied dramatically in their efficacy and safety and had only limited published data supporting their use in patients with disorders of gut-brain interaction.

[Learn more](#)



#### Both ERC and PTBD can be considered as first line biliary intervention in liver transplantation recipients with a biliary-enteric anastomoses

Study data suggest that endoscopic retrograde cholangiography (ERC) and percutaneous transhepatic biliary drainage (PTBD) have comparable effectiveness in this patient population.

[Learn more](#)



#### Research identifies several distinct patient subsets among large group of individuals diagnosed with IBS

The seven unique disease subsets identified among patients diagnosed with irritable bowel syndrome (IBS) suggest that variables beyond predominant bowel habits affect clinical course and outcomes.

[Learn more](#)

[See all Gastroenterology and Hepatology Clinical Trials at Mayo Clinic](#)

### Education

Mayo Clinic School of Continuous Professional Development offers [live courses](#), [livestreaming courses](#), [online continuing medical education \(CME\) courses](#) and [podcasts](#) to meet your CME needs.

[See all Gastroenterology Continuing Medical Education courses](#)



#### Innovations in Management of Pancreatic Conditions and Therapies: The Mayo Clinic IMPACT Course 2023

April 21, 2023  
Rochester, Minn., and Livestream

This one-day course with pancreas experts highlights recent innovations in the management of pancreatic conditions and therapies that can be incorporated into clinical practice.

[Register Now](#)



#### Innovations in Gastroenterology & Hepatology: AI & Beyond

May 19-20, 2023  
Minneapolis and Livestream

This course focuses on exciting and promising innovations, including endoscopy techniques and devices, digital applications, and artificial intelligence (AI)-enabled tools for diagnosis and management of gastrointestinal and hepatobiliary diseases.

[Register Now](#)

### COVID-19 Updates and Resources

[Read more](#)

### Consults and Referrals

Phoenix/Scottsdale, Arizona  
866-629-6362

Jacksonville, Florida  
800-634-1417

Rochester, Minnesota  
800-533-1564

Mayo Clinic Health System  
855-392-8400

[Online Referrals](#)

### Resources

[Life-Changing Careers](#)

[Clinical Trials](#)

[Mayo Clinic School of Continuous Professional Development](#)



[Comments?](#)

We're interested in your feedback about this newsletter.

[Pass It On](#)

Invite a friend to subscribe.