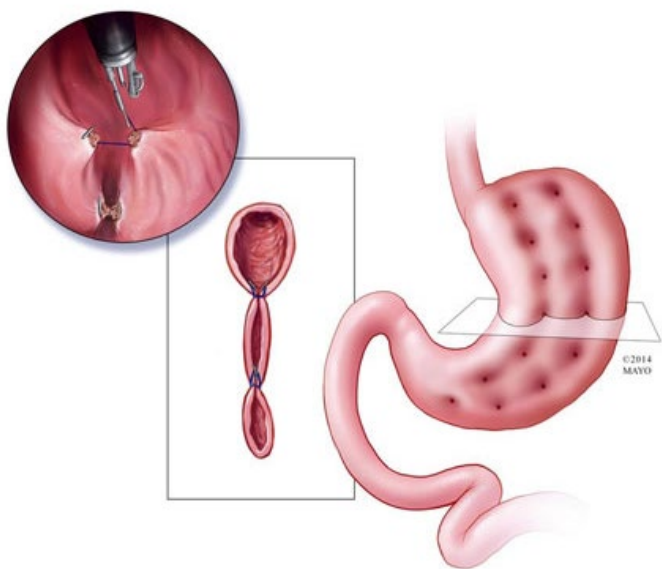




Digestive Diseases Physician Update

March 2022

Patient Care



Worldwide survey gathers valuable insight from practitioners performing endoscopic sleeve gastropasty (ESG)

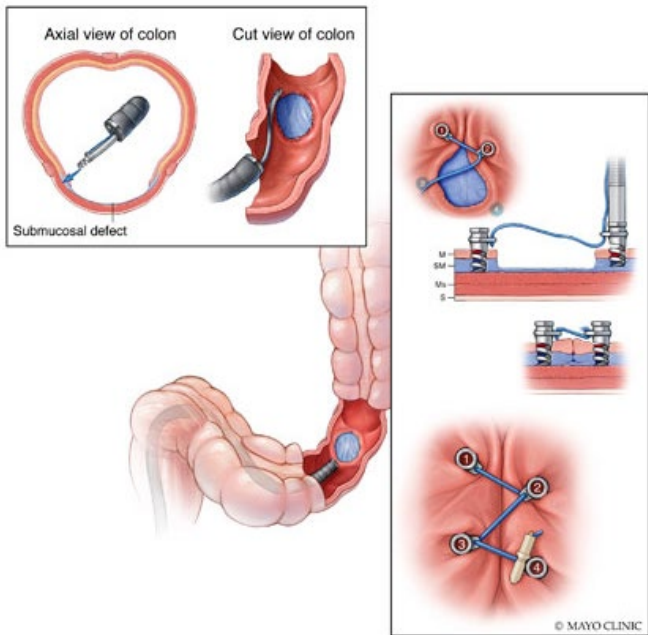
A Mayo Clinic survey assesses ESG-related practice trends and preferences of bariatric endoscopists who perform this weight-loss procedure.

[Learn more](#)

[See more Digestive Diseases news](#)

[View Digestive Diseases specialty videos and Grand Rounds presentations](#)

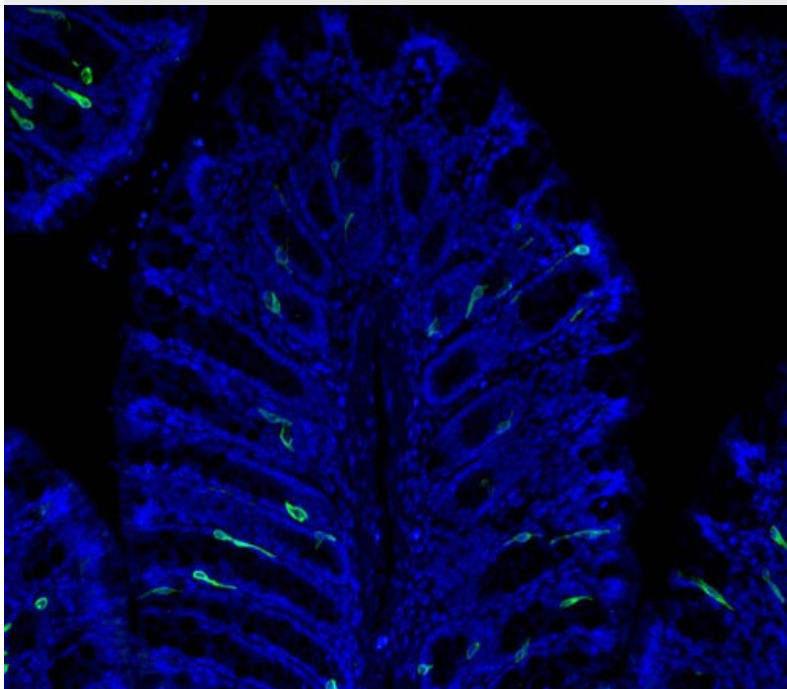
Research



Novel through-the-endoscope suturing permits closure of large and irregularly shaped defects after polyp removal

A multicenter study led by Mayo Clinic physicians demonstrates that the endoscopic through-the-scope tack and suture system is safe and efficient.

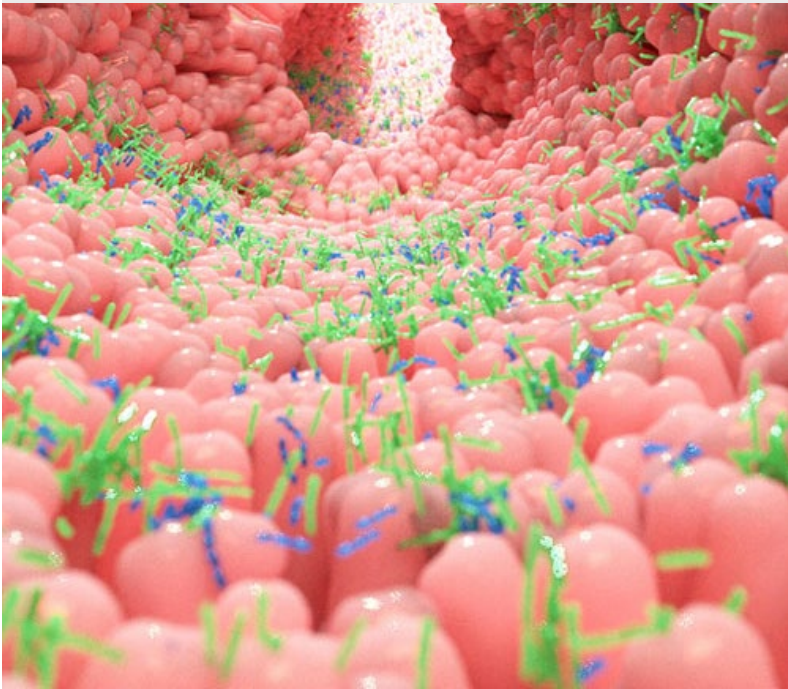
[Learn more](#)



Studies explore the concept that the gut can 'touch' and 'feel' what's inside

Research demonstrates that specialized sensory cells within the gastrointestinal tract have a lot in common with the way the skin feels the sensation of touch.

[Learn more](#)



Investigators seek better understanding of associations between gastrointestinal microbiota and obesity

Mayo Clinic researchers summarize the pathogenesis of obesity, the relationship between gut microbiota and obesity, and the future of microbiota-based therapies in obesity management.

[Learn more](#)

[See all Gastroenterology and Hepatology Clinical Trials at Mayo Clinic](#)

Education

Mayo Clinic School of Continuous Professional Development offers [live courses](#), [livestreaming courses](#), [online continuing medical education \(CME\) courses](#) and [podcasts](#) to meet your CME needs. Medical education from Mayo Clinic experts is also available through [GIBLIB](#), a new on-demand medical education library.

[See all Gastroenterology Continuing Medical Education courses](#)



Innovations in Management of Pancreatic Conditions and Therapies:



Gastroenterology & Hepatology Board Review 2022

The Mayo Clinic IMPACT Course — LIVESTREAM

April 22, 2022

Livestream

This one-day course with pancreas experts highlights recent innovations in the management of pancreatic conditions and the therapies that can be incorporated into clinical practice.

[Register Now](#)

Sept. 8-11, 2022
Chicago and Livestream

This comprehensive review helps prepare candidates for the initial and maintenance of certification examinations. It includes case-based content delivered by Mayo Clinic faculty who deliver up-to-date, practical information.

[Register Now](#)

COVID-19 updates & resources

[Read more](#)

Consults and Referrals

Phoenix/Scottsdale, Arizona

844-779-5824

Jacksonville, Florida

844-529-7563

Rochester, Minnesota

844-561-0880

Mayo Clinic Health System

855-392-8400

[Online Referrals](#)

Resources

[Life-Changing Careers](#)

[Clinical Trials](#)

[Mayo Clinic School of Continuous Professional Development](#)



[Comments?](#)

We're interested in your feedback about this newsletter.

[Pass It On!](#)

Invite a friend to subscribe.

[MayoClinic.org](#) | [Newsletter Archive](#) | [Contact](#) | [Medical Professionals](#)
