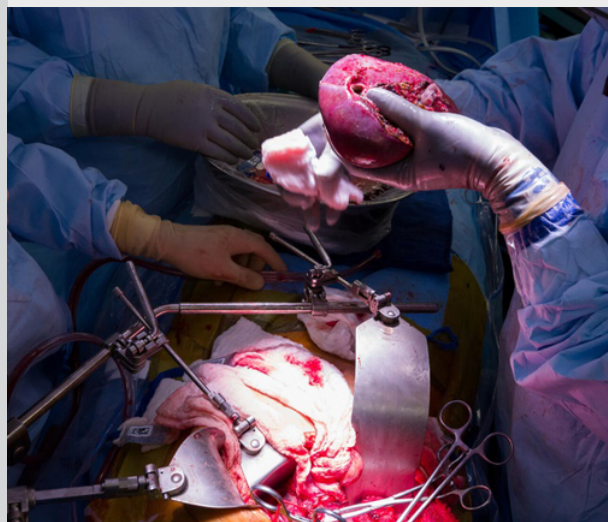


## Digestive Diseases Physician Update

July 2022

### Patient Care



#### Mayo Clinic performing liver transplants in patients with colorectal liver metastases

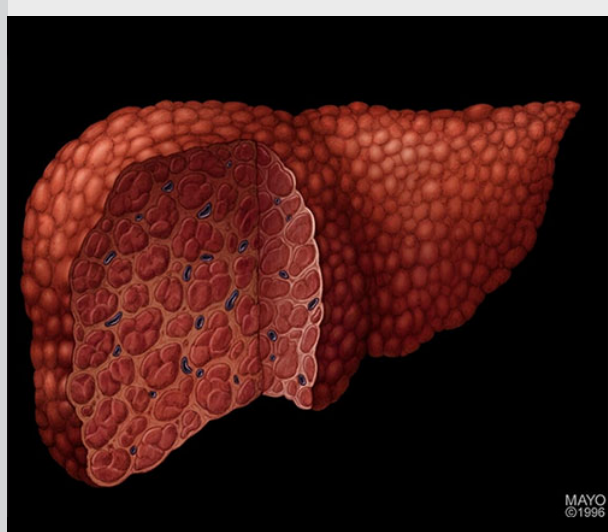
In highly selected patients, liver transplant can offer significantly improved outcomes for patients with colorectal liver metastases and is an important option when other therapies are not feasible.

[Learn more](#)

[See more Digestive Diseases news](#)

[View Digestive Diseases specialty videos and Grand Rounds presentations](#)

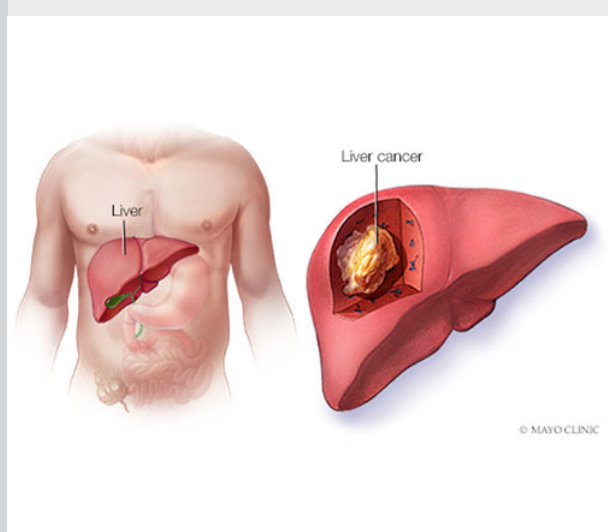
### Research



#### Mayo Clinic researchers use artificial intelligence tool analysis of ECG findings to detect cirrhosis

A deep learning-based artificial intelligence model using convolutional neural networks to analyze 12-lead electrocardiograms (ECGs) performed well in detecting the presence and severity of hepatic cirrhosis.

[Learn more](#)



#### Germline cancer susceptibility gene testing in patients with HBC enhances detection of heritable mutations in over 15% of study participants

Data from Mayo Clinic's INTERCEPT trial suggests that germline testing should be considered in all patients with hepatobiliary cancer (HBC).

[Learn more](#)



#### Study examines whether ETO gas sterilization of EUS imaging equipment affects image and video quality

Addition of ethylene oxide (ETO) gas sterilization to the disinfection process for endoscopic ultrasound (EUS) equipment does not appear to degrade image and video quality.

[Learn more](#)

[See all Gastroenterology and Hepatology Clinical Trials at Mayo Clinic](#)

### Education

Mayo Clinic School of Continuous Professional Development offers [live courses](#), [livestreaming courses](#), [online continuing medical education \(CME\) courses](#) and [podcasts](#) to meet your CME needs. Medical education from Mayo Clinic experts is also available through GIBLIB, a new on-demand medical education library.

[See all Gastroenterology Continuing Medical Education courses](#)



#### Gastroenterology & Hepatology Board Review 2022

Sept. 8-11, 2022

Chicago and Livestream

This comprehensive review helps prepare candidates for the initial and maintenance of certification examinations. It includes case-based content provided by Mayo Clinic faculty who deliver up-to-date, practical information.

[Register Now](#)



#### Mayo Clinic Women in Gastroenterology & Hepatology Showcase: If you cannot see it, you cannot be it! 2022 — LIVESTREAM

Sept. 16, 2022

Livestream

Nationally and internationally recognized women in gastroenterology and hepatology discuss clinical care, education, clinical-basic science research and professional development knowledge.

[Register Now](#)



#### 8th Annual Gastroenterology & Hepatology Update with Interactive Live Endoscopy — 2022

Sept. 30-Oct. 1, 2022

Phoenix and Livestream

Course faculty members discuss common disorders — including polyps, IBS, celiac disease, esophageal conditions, gallstones, bile duct stones, hepatocellular carcinoma, hepatitis B and fatty liver disease — and GI endoscopy.

[Register Now](#)



#### Mayo Clinic Hepato-Pancreatico-Biliary Cancer Symposium 2022

Oct 21-22, 2022

Las Vegas and Livestream

This update describes the latest treatment options for patients with hepato-pancreatico-biliary cancers, including surgery, radiation, locoregional approaches and systemic therapies.

[Register Now](#)

### COVID-19 Updates and Resources

[Read more](#)

### Consults and Referrals

Phoenix/Scottsdale, Arizona  
844-779-5824

Jacksonville, Florida  
844-529-7563

Rochester, Minnesota  
844-561-0880

Mayo Clinic Health System  
855-392-8400

[Online Referrals](#)

### Resources

[Life-Changing Careers](#)

[Clinical Trials](#)

[Mayo Clinic School of Continuous Professional Development](#)



[Comments?](#)

We're interested in your feedback about this newsletter.

[Pass It On](#)

Invite a friend to subscribe.