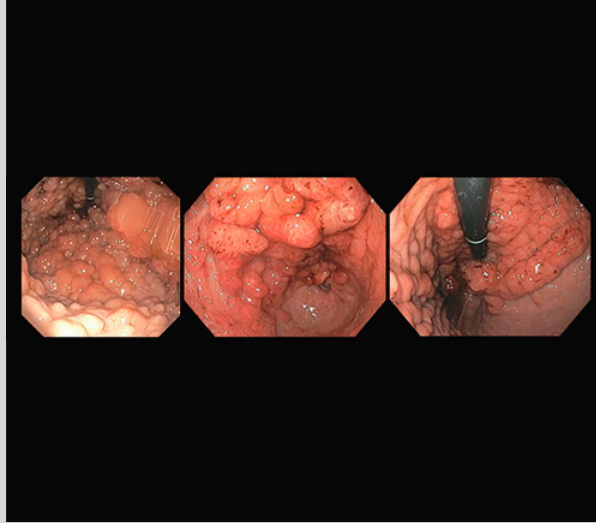




Digestive Diseases Physician Update

January 2025

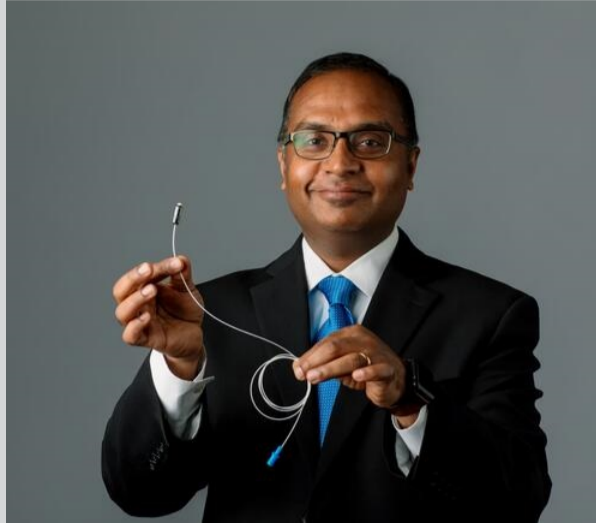
Research



Study examines the incidence of gastric cancers and associated risk factors in patients with familial adenomatous polyposis

The researchers shared findings that could help refine surveillance guidelines to improve detection rates and guide timely intervention for potentially malignant lesions.

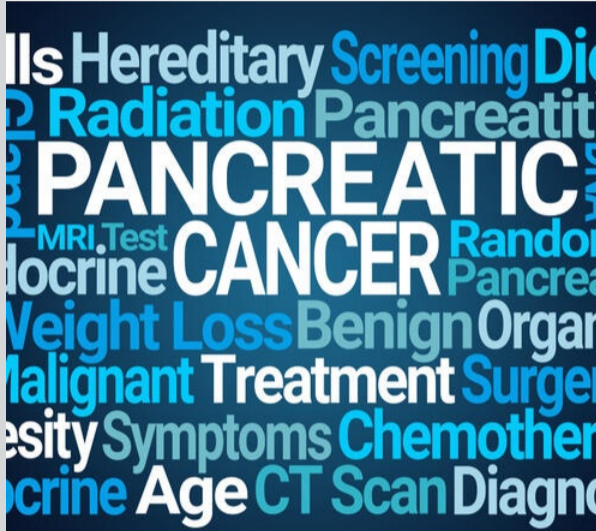
[Learn more](#)



Multicenter study trains and tests algorithm for nonendoscopic tool to detect Barrett esophagus

The study results demonstrate that nonendoscopic detection of BE using methylated DNA markers and a locked algorithm is an accurate, safe and well-tolerated alternative to sedated esophagogastroduodenoscopy.

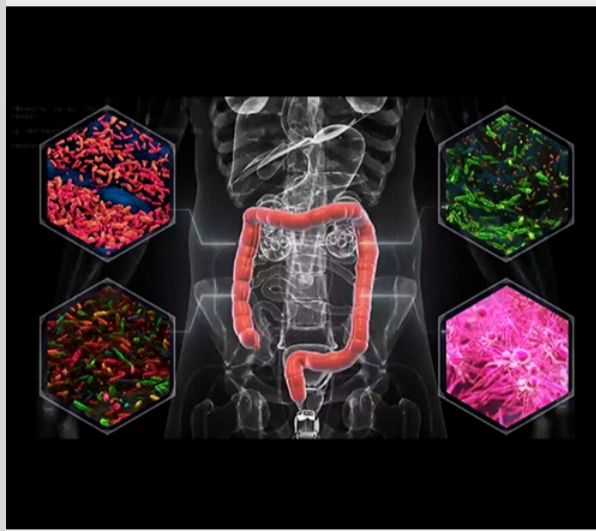
[Learn more](#)



Researchers assess performance of artificial intelligence tools in identifying pancreatic cancer (PC) risk

Shounak Majumder, M.D., summarizes the significance of studies using machine learning and natural language processing to accurately delineate PC risk and identify novel risk factors.

[Learn more](#)



Mayo Clinic researchers working to identify links between microbiome composition and cancer

By analyzing an extensive stool biobank, the researchers hope to determine whether the microbiome correlates with specific cancer types and an individual's response to cancer treatments.

[Learn more](#)

Patient Care

[Refer a Patient](#)

[See more Digestive Diseases news](#)

[View Digestive Diseases specialty videos and Grand Rounds presentations](#)

Education

Mayo Clinic School of Continuous Professional Development offers [live courses](#), [livestreaming courses](#), [online continuing medical education \(CME\) courses](#) and [podcasts](#) to meet your CME needs.

[See all Gastroenterology Continuing Medical Education courses](#)



2nd Annual Mayo Clinic Gastroenterology for the Hospitalist Provider 2025 Feb. 22-23, 2025 Nashville, Tenn., and Livestream

This course provides hospital practitioners with information on common GI diseases and situations encountered in the inpatient setting, including GI bleeding, nutrition, inflammatory bowel disease, pancreatitis, cirrhosis and acute diverticulitis.

[Register Now](#)



Mayo Clinic Gastroenterology & Hepatology 2025 March 24-28, 2025 Kapalua, Hawaii, and Livestream

This course shares new approaches to the diagnosis and management of gastrointestinal and liver diseases, including sessions on general gastroenterology, inflammatory bowel disease, colorectal neoplasia, esophageal diseases, motility, nutrition, pancreaticobiliary disorders, endoscopy and hepatology.

[Register Now](#)



Innovations in Management of Pancreatic Conditions and Therapies: The Mayo Clinic IMPACT Course 2025 April 11, 2025 Rochester, Minn., and Livestream

This course focuses on the management of benign and malignant pancreatic disorders, including recent innovations in management and therapies that can be incorporated into clinical practice.

[Register Now](#)

Consults and Referrals

Phoenix/Scottsdale, Arizona
866-629-6362

Jacksonville, Florida
800-634-1417

Rochester, Minnesota
800-533-1564

Mayo Clinic Health System
855-392-8400

[Online Referrals](#)

Resources

[Life-Changing Careers](#)

[Clinical Trials](#)

[Mayo Clinic School of Continuous Professional Development](#)



[Comments?](#)

We're interested in your feedback about this newsletter.

[Pass It On](#)

Invite a friend to subscribe.

[MayoClinic.org](#) | [Newsletter Archive](#) | [Contact](#) | [Medical Professionals](#)

Imagery is copyright Mayo Clinic, Getty Images, Shutterstock, or approved for use.