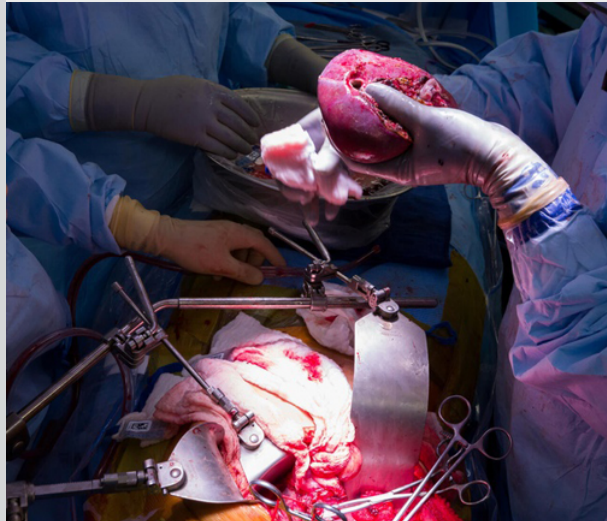


# Clinical Physician Update

September 2022

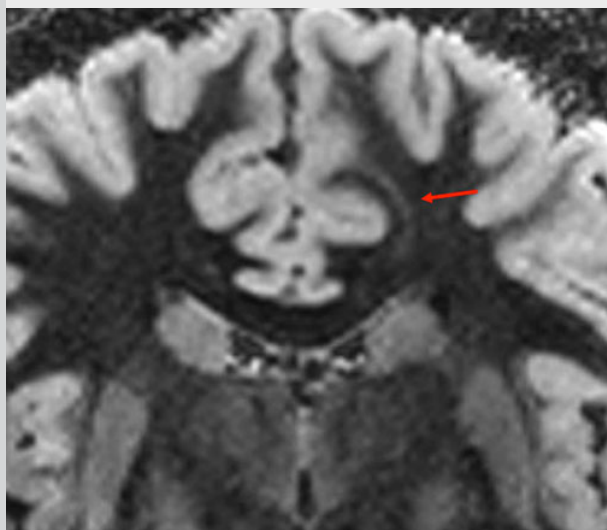
## Patient Care



### Liver transplant for colorectal liver metastases

Mayo Clinic in Jacksonville, Florida, is one of the few centers in the U.S. that offers transplant as a viable treatment option for colorectal liver metastases, which can significantly improve patient outcomes.

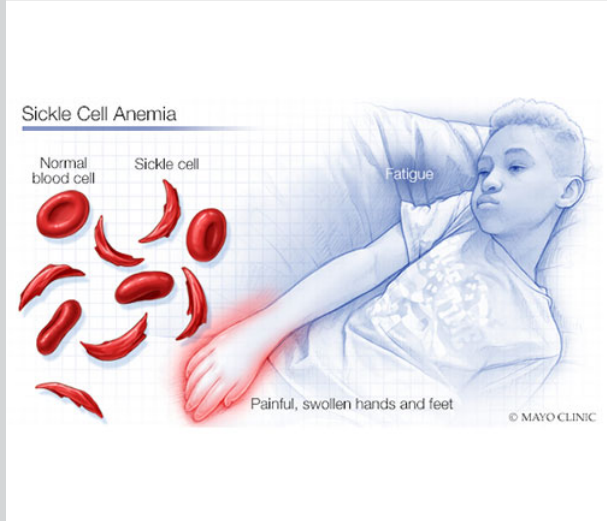
[Learn more](#)



### PET scans and 7-tesla MRI increase chances of detecting small epileptogenic lesions

Clinic surgeons use both positron emission tomography (PET) scans and 7-tesla MRI to image individuals with epilepsy and determine if they are potential candidates for surgical treatment.

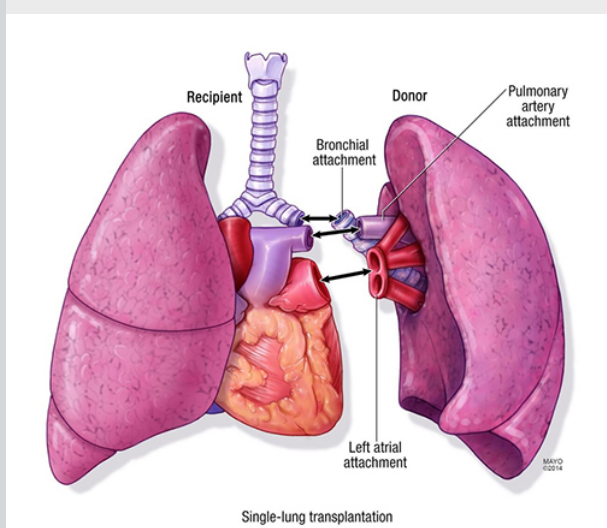
[Learn more](#)



### Bone marrow transplant, curative treatment for sickle cell disorder

The multidisciplinary team at Mayo Clinic Children's Center uses BMT to treat sickle cell disease. Using a holistic approach, hematologists work with psychologists and social workers to address a patient's physical, social and emotional needs.

[Learn more](#)



### Determining appropriate treatment options for severe lung disease

Mayo Clinic's transplant team assesses appropriate treatments, which include clinical trials, medical therapies, advanced lung procedures and transplant procedures, for patients with severe lung disease.

[Learn more](#)

[Visit the Medical Professional Video Center to view specialty videos and Grand Rounds presentations](#)

## Research



### Direct oral anticoagulants improve cancer-associated thrombosis

Mayo Clinic researchers find that direct oral anticoagulants significantly decreased cancer-associated venous thrombosis recurrence in adult patients, without significantly increasing bleeding.

[Learn more](#)

[See all Family Medicine and General Internal Medicine Clinical Trials at Mayo Clinic](#)

## Education

Mayo Clinic School of Continuous Professional Development offers [live courses](#), [livestreaming courses](#), [online continuing medical education \(CME\) courses](#) and [podcasts](#) to meet your CME needs. Medical education from Mayo Clinic experts is also available through GIBLIB, a new on-demand medical education library.

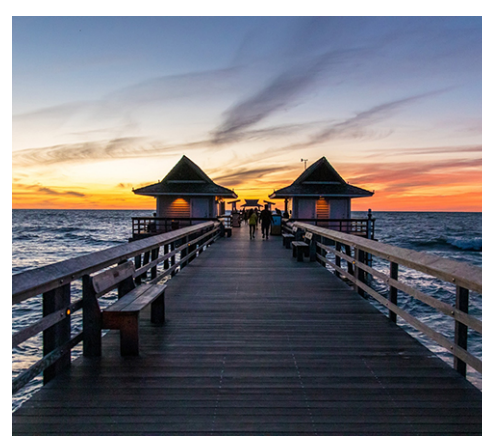
[See all Family Medicine and Internal Medicine and Subspecialties Continuing Medical Education courses](#)



### Parkinson's Disease and Other Movement Disorders — 2022 Nov. 4-5, 2022 Phoenix and Livestream

This course focuses on standard-of-care treatment algorithms for the management of movement disorders and video demonstrations to assist with diagnosis.

[Register Now](#)



### Mayo Clinic Women's Imaging Review Course 2022 Dec. 5-9, 2022 Naples, Fla.

This postgraduate course for radiologists and radiologists-in-training covers standard practices and core knowledge of imaging interpretation with an emphasis on emerging techniques and current controversies in breast and pelvic imaging.

[Register Now](#)

## COVID-19 Updates and Resources

[Read more](#)

## Consults and Referrals

Phoenix/Scottsdale, Arizona  
844-255-4442

Jacksonville, Florida  
855-691-1265

Rochester, Minnesota  
888-380-4055

[Online Referrals](#)

## Resources

[Life-Changing Careers](#)

[Clinical Trials](#)

[Mayo Clinic School of Continuous Professional Development](#)



Comments?

We're interested in your feedback about this newsletter.

Pass It On

Invite a friend to subscribe.