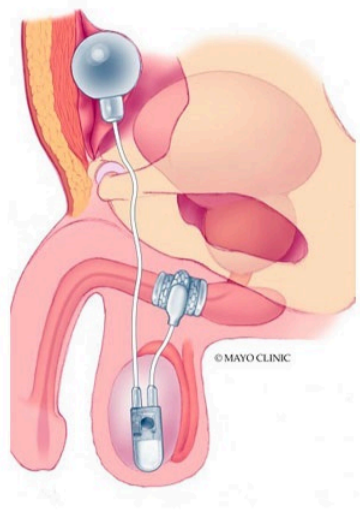


Clinical Physician Update

October 2024

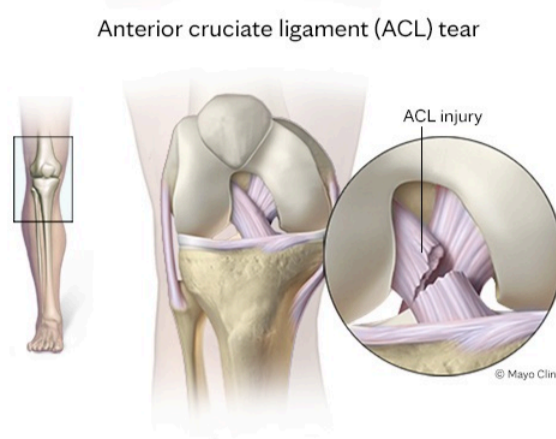
Patient Care



AUS used to treat male urinary incontinence at Mayo Clinic

Mayo Clinic has the world's largest databank of patients with artificial urinary sphincters — more than 3,000 — and its physicians have implanted more AUS devices than any other institution worldwide.

[Learn more](#)



Reconstruction for teen athletes with ACL injury

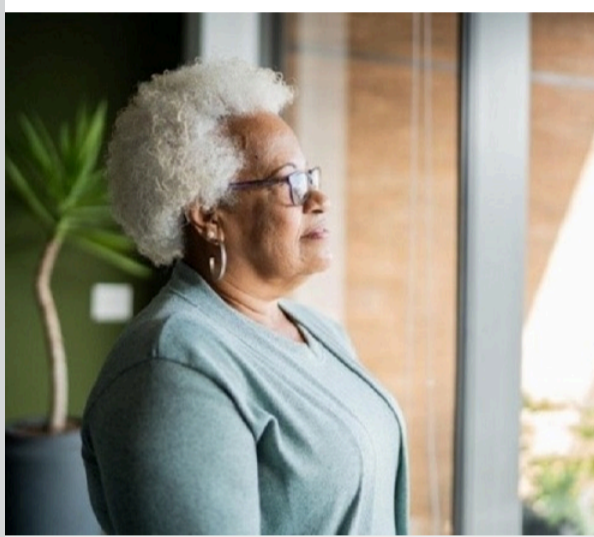
A specialist talks about the high risk of ACL injury in teen athletes, risks of delayed treatment, concomitant knee injuries and referral for this injury.

[Learn more](#)

[Refer a Patient](#)

Visit the Medical Professional Video Center to view specialty videos and Grand Rounds presentations

Research



AI-ECG shows social isolation impacts cardiac aging

Researchers explored the connection between social isolation and biological aging using artificial intelligence-enabled electrocardiography (AI-ECG). AI-ECG technology, previously developed by Mayo Clinic, provides the cardiac age estimate based on the electrocardiogram record.

[Learn more](#)



Treating type 1 diabetes in the early stages

According to a recent study, a new immune-modulating therapy helps slow the rate of islet cell loss for people in the early stages of type 1 diabetes.

[Learn more](#)

[See all Family Medicine and General Internal Medicine Clinical Trials at Mayo Clinic](#)

Education

Mayo Clinic School of Continuous Professional Development offers [live courses](#), [livestreaming courses](#), [online continuing medical education \(CME\) courses](#) and [podcasts](#) to meet your CME needs.

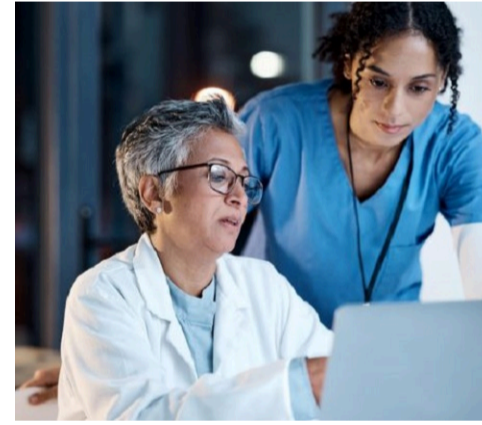
[See all Family Medicine and Internal Medicine and Subspecialties Continuing Medical Education courses](#)



2024 Men's Health Update: Engagement, Prevention and Performance Dec. 6-7, 2024 Phoenix and Livestream

This course includes presentations from key men's health specialties, including healthcare disparities in men, male infertility, prostate cancer treatment and screening, transgender healthcare, and mental healthcare in men.

[Register Now](#)



Reporting in eMedical for Civil Surgeons Dec. 12, 2024 Livestream

This course ensures that civil surgeons are well-prepared to integrate eMedical into their workflow. Participants learn strategies that promote efficiency and accuracy in tuberculosis case management.

[Register Now](#)

Consults and Referrals

Phoenix/Scottsdale, Arizona
866-629-6362

Jacksonville, Florida
800-634-1417

Rochester, Minnesota
800-533-1564

[Online Referrals](#)

Resources

[Life-Changing Careers](#)

[Clinical Trials](#)

[Mayo Clinic School of Continuous Professional Development](#)



[Comments?](#)

We're interested in your feedback about this newsletter.

[Pass It On](#)

Invite a friend to subscribe.

[MayoClinic.org](#) | [Newsletter Archive](#) | [Contact](#) | [Medical Professionals](#)