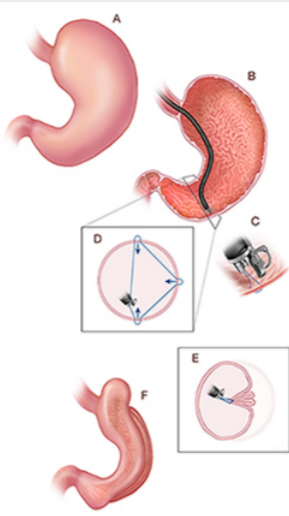


Clinical Physician Update

May 2023

Patient Care



MERIT-Trial demonstrates safety and efficacy of ESG for obesity

Endoscopic sleeve gastropasty (ESG), combined with lifestyle modifications, is a safe intervention that helps patients with class 1 or 2 obesity achieve and maintain significant weight loss and improve metabolic comorbidities.

[Learn more](#)



Immunoassay is a key component in hypoglycemia work-up

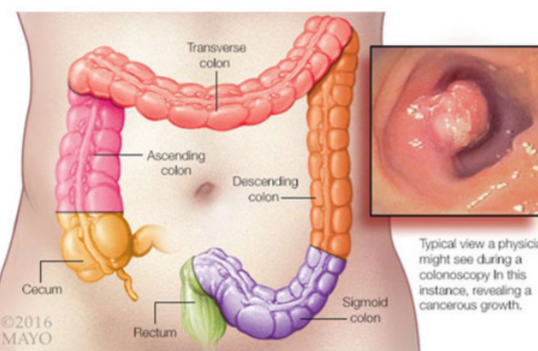
A Mayo Clinic multidisciplinary team performed analytical validation of a liquid chromatography high-resolution accurate mass (LC-HRAM) immunoassay to detect insulin analogs and human insulin in patients.

[Learn more](#)

Visit the [Medical Professional Video Center](#) to view specialty videos and Grand Rounds presentations

[Refer a Patient](#)

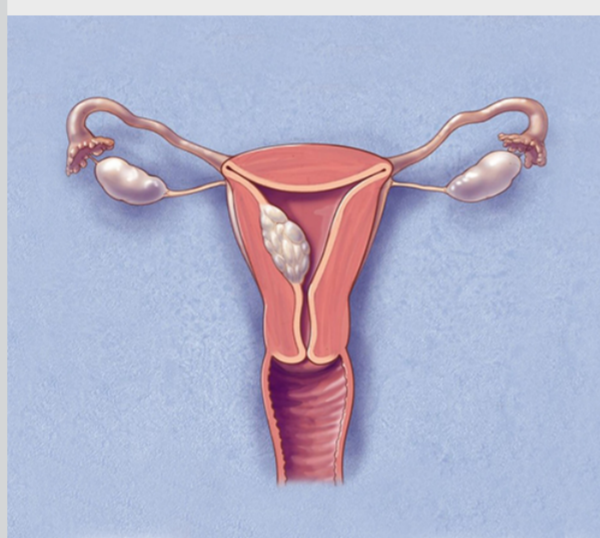
Research



AI-assisted colonoscopies reduce the miss rate for colorectal neoplasia by half

Mayo Clinic Gastroenterology and Hepatology and colleagues worldwide found that using artificial intelligence (AI) in colorectal cancer screening produced a 50% reduction in the miss rate for colorectal neoplasia.

[Learn more](#)



Hysterectomy for endometrial cancer trending toward outpatient

Hysterectomy for endometrial cancer has shifted from the inpatient setting to minimally invasive surgery in the outpatient setting, according to a study published in International Journal of Gynecological Cancer.

[Learn more](#)

See all [Family Medicine and General Internal Medicine Clinical Trials at Mayo Clinic](#)

Education

Mayo Clinic School of Continuous Professional Development offers [live courses](#), [livestreaming courses](#), [online continuing medical education \(CME\) courses](#) and [podcasts](#) to meet your CME needs.

See all [Family Medicine and Internal Medicine and Subspecialties Continuing Medical Education courses](#)



Transforming Women's Health 2023

June 8-10, 2023
Chicago and Livestream

This conference enables health care professionals to improve care of women. Topics include emerging scientific and clinical evidence related to conditions that are unique to women, occur more frequently in women or present differently in women.

[Register Now](#)



Mayo Clinic 29th Annual Clinical Reviews and Primary Care Update

June 19-23, 2023
Amelia Island, Fla., and Livestream

This comprehensive program consists of lectures, workshops and panel discussions on topics of general interest in various areas of medicine, updating physicians on the latest recommendations of medical subspecialties integral to primary care.

[Register Now](#)

Consults and Referrals

[Phoenix/Scottsdale, Arizona](#)
866-629-6362

[Jacksonville, Florida](#)
800-634-1417

[Rochester, Minnesota](#)
800-533-1564

Resources

[Life-Changing Careers](#)

[Clinical Trials](#)

[Mayo Clinic School of Continuous Professional Development](#)



[Comments?](#)

We're interested in your feedback about this newsletter.

[Pass It On](#)

Invite a friend to subscribe.