

# Clinical Physician Update

June 2024

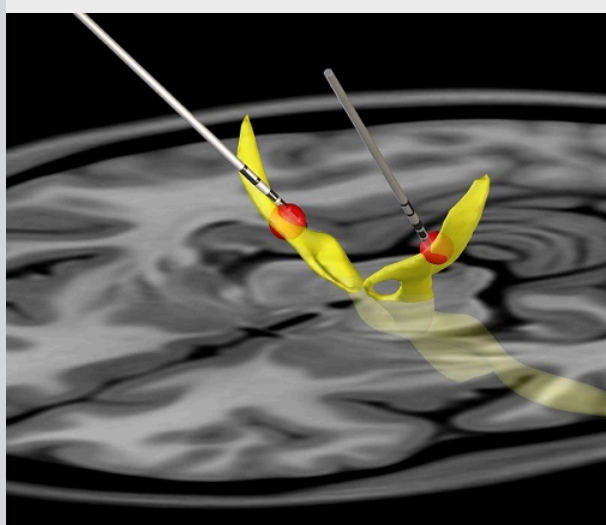
## Patient Care



### Multidisciplinary care and specialized training for rectal cancer

Colorectal cancer surgeons at Mayo Clinic are advancing treatment options by using multidisciplinary teams subspecialized to complex cancers. These teams advance care options and research for recurrent rectal cancer.

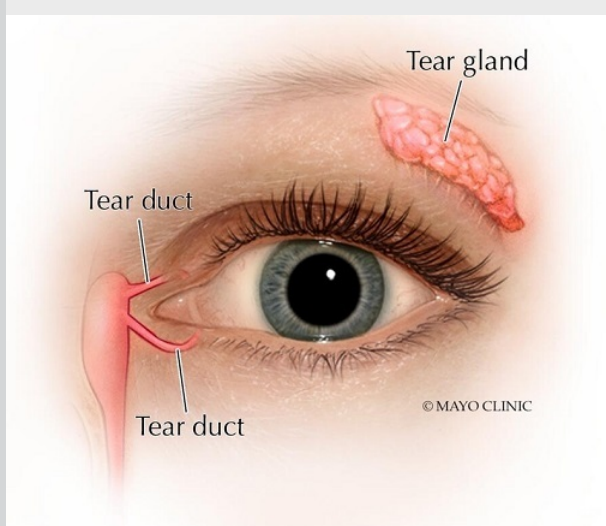
[Learn more](#)



### Cutting-edge technology enhances management of movement disorders

Mayo Clinic neurologists have extensive experience with the treatment of complex movement disorders. Innovations in diagnosis and deep brain stimulation (DBS) can potentially improve outcomes.

[Learn more](#)



### New testing and treatments offered at dry eye clinic

Mayo Clinic's new dry eye clinic offers new imaging and treatment options, along with comprehensive, multidisciplinary care.

[Learn more](#)



### Total knee replacement technology developments

Mayo Clinic Orthopedic Surgery has committed to innovations in technology for patients who need total knee replacements.

[Learn more](#)

[Refer a Patient](#)

Visit the Medical Professional Video Center to view specialty videos and Grand Rounds presentations

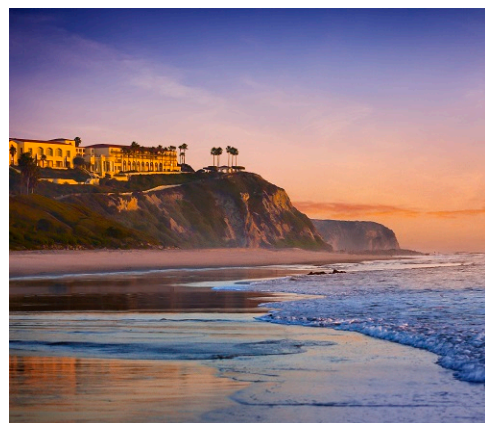
## Research

See all Family Medicine and General Internal Medicine Clinical Trials at Mayo Clinic

## Education

Mayo Clinic School of Continuous Professional Development offers [live courses](#), [livestreaming courses](#), [online continuing medical education \(CME\) courses](#) and [podcasts](#) to meet your CME needs.

See all Family Medicine and Internal Medicine and Subspecialties Continuing Medical Education courses



### Clinical Updates in Allergy and Immunology 2024

Aug. 1-4, 2024  
Dana Point, Calif., and Livestream

This course includes evidence-based and emerging clinical approaches presented by expert faculty from allergy, dermatology and other medical specialties to provide a comprehensive and multidisciplinary perspective on allergic disorders.

[Register Now](#)



### Systematic Approach to Medically Unexplained Symptoms 2024

Aug. 7-10, 2024  
Seattle and Livestream

This course begins with a discussion of the pathophysiological process of central sensitization followed by lectures focusing on specific medically unexplained conditions and symptoms.

[Register Now](#)

## Consults and Referrals

Phoenix/Scottsdale, Arizona  
866-629-6362

Jacksonville, Florida  
800-634-1417

Rochester, Minnesota  
800-533-1564

[Online Referrals](#)

## Resources

[Life-Changing Careers](#)

[Clinical Trials](#)

[Mayo Clinic School of Continuous Professional Development](#)



Comments?

We're interested in your feedback about this newsletter.

Pass It On

Invite a friend to subscribe.