

# Clinical Physician Update

July 2022

## Patient Care



### Mayo Clinic first to use heart pump as bridge to transplant

Mayo Clinic in Florida is the only facility in the world that uses a heart pump to help circulate blood as a transition to transplant in severe heart failure.

[Learn more](#)



### Adaptive equipment helps people with disabilities strength train

A Mayo Clinic physiatrist's strength training program helps patients develop the strength and coordination needed for new activities. This program can also help athletes improve performance and prevent injuries.

[Learn more](#)



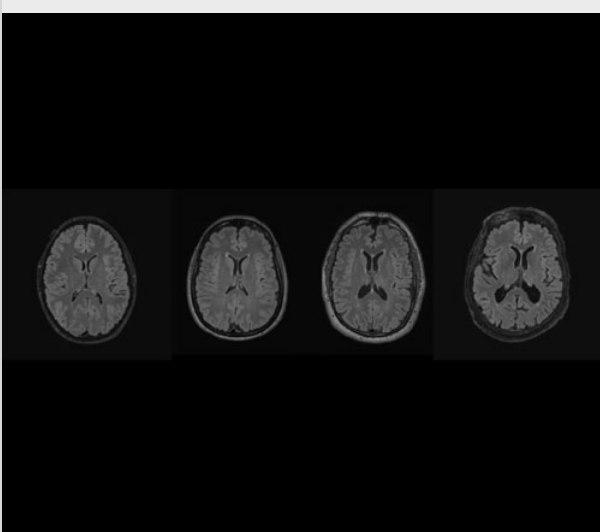
### Preparing for emergencies and disasters, action plan

Be it an emergency or a natural disaster, preparation is critical to saving lives. Trauma center response plans range from regular emergency drills and discussions to full-scale exercises with actors playing patients.

[Learn more](#)

[Visit the Medical Professional Video Center to view specialty videos and Grand Rounds presentations](#)

## Research



### Behavioral changes detected nearly 20 years before onset of Alzheimer's

Mayo Clinic's personality-based longitudinal testing helps identify transitions to mild cognitive impairment in people at risk of dementia — detecting cognitive and behavioral changes nearly two decades before Alzheimer's symptoms appear.

[Learn more](#)

[See all Family Medicine and General Internal Medicine Clinical Trials at Mayo Clinic](#)

## Education

Mayo Clinic School of Continuous Professional Development offers [live courses](#), [livestreaming courses](#), [online continuing medical education \(CME\) courses](#) and [podcasts](#) to meet your CME needs. Medical education from Mayo Clinic experts is also available through [GIBLIB](#), a new on-demand medical education library.

[See all Family Medicine and Internal Medicine and Subspecialties Continuing Medical Education courses](#)



### 22nd Annual Nutrition and Wellness in Health and Disease 2022

Oct. 16-18, 2022  
Coronado, Calif., and Livestream

Focus includes data-gathering to address the needs of patients with obesity and associated medical conditions, plus the benefits of quality nutrition for overall health, aging and cardiovascular health.

[Register Now](#)



### 8th Annual Gastroenterology & Hepatology Update with Interactive Live Endoscopy — 2022

Sept. 30-Oct. 1, 2022  
Phoenix and Livestream

Course faculty members discuss common disorders — including polyps, IBS, celiac disease, esophageal conditions, gallstones, bile duct stones, hepatocellular carcinoma, hepatitis B and fatty liver disease — and GI endoscopy.

[Register Now](#)

## COVID-19 Updates and Resources

[Read more](#)

## Consults and Referrals

[Phoenix/Scottsdale, Arizona](#)  
844-255-4442

[Jacksonville, Florida](#)  
855-691-1265

[Rochester, Minnesota](#)  
888-380-4055

[Online Referrals](#)

## Resources

[Life-Changing Careers](#)

[Clinical Trials](#)

[Mayo Clinic School of Continuous Professional Development](#)



[Comments?](#)

We're interested in your feedback about this newsletter.

[Pass It On](#)

Invite a friend to subscribe.