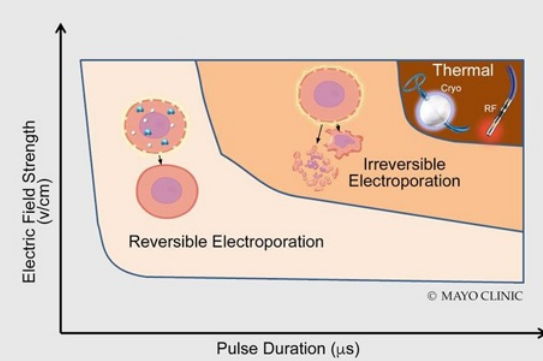


Clinical Physician Update

December 2024

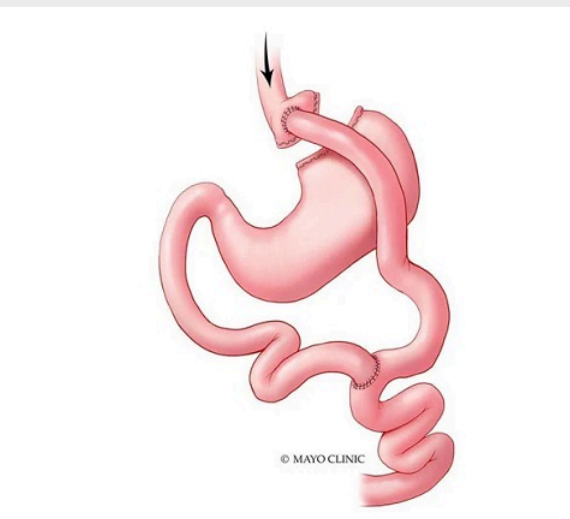
Patient Care



Safer and faster atrial fibrillation ablation using novel energy source pulsed field ablation

Cardiologists in Mayo Clinic's Heart Rhythm Services are successfully using novel energy source pulsed field ablation in patient care for AFib ablation.

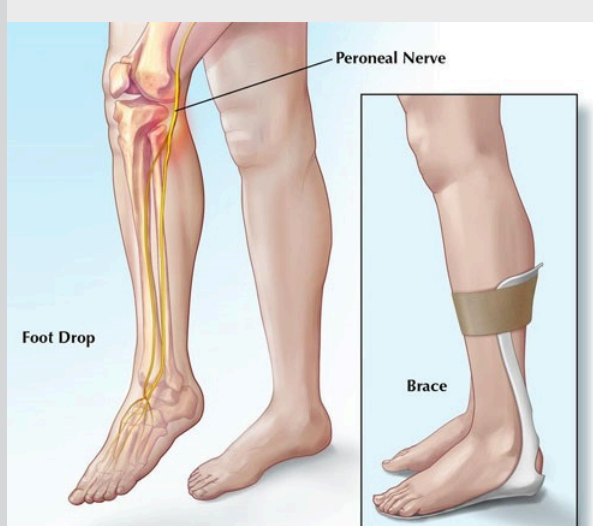
[Learn more](#)



Interventional endoscopy approaches can help in management of bariatric surgery complications and lead to improved patient outcomes

Mayo Clinic endoscopists share a comprehensive overview of the most common postoperative complications and the techniques and devices available to help manage them.

[Learn more](#)



Patients state they'd have Bridle procedure again for foot drop

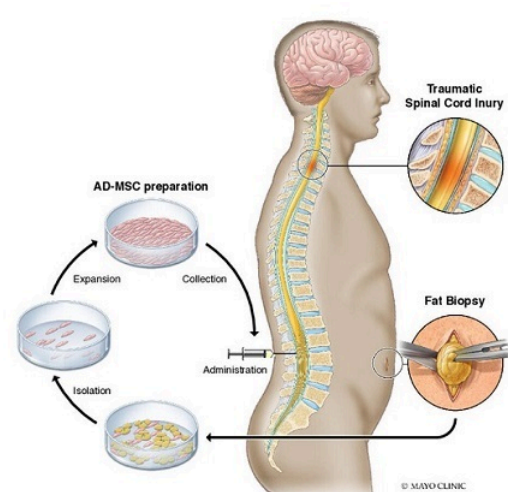
The Bridle procedure for foot drop allows patients to walk without wearing a brace. A Mayo Clinic orthopedic surgeon reports patient satisfaction rates with the procedure are greater than 90%.

[Learn more](#)

Refer a Patient

Visit the Medical Professional Video Center to view specialty videos and Grand Rounds presentations

Research



Phase 1 trial demonstrates safety of stem cell therapy for spinal cord injuries

Seven of 10 participants in the preliminary trial showed improvement after regenerative medicine therapy.

[Learn more](#)

See all Family Medicine and General Internal Medicine Clinical Trials at Mayo Clinic

Education

Mayo Clinic School of Continuous Professional Development offers live courses, livestreaming courses, online continuing medical education (CME) courses and podcasts to meet your CME needs.

See all Family Medicine and Internal Medicine and Subspecialties Continuing Medical Education courses



Mayo Clinic Practical Integrative Medicine: Renew, Rejuvenate, Inspire & Connect 2025

Feb. 13-15, 2025
Amelia Island, Fla., and Livestream

This course is designed for healthcare professionals in the many disciplines involved in primary care integrated behavioral health, including psychiatry, psychology, social work, nursing, primary care, pharmacy and pediatrics.

[Register Now](#)



Clinical Reviews 2025: 36th Annual Family Medicine and Internal Medicine Update

Feb. 25-28, 2025
Scottsdale, Ariz., and Livestream

This four-day continuing medical education course features updates and management strategies on various diseases.

[Register Now](#)

Consults and Referrals

Phoenix/Scottsdale, Arizona
866-629-6362

Jacksonville, Florida
800-634-1417

Rochester, Minnesota
800-533-1564

[Online Referrals](#)

Resources

[Life-Changing Careers](#)

[Clinical Trials](#)

[Mayo Clinic School of Continuous Professional Development](#)



Comments?

We're interested in your feedback about this newsletter.

Pass It On

Invite a friend to subscribe.

[MayoClinic.org](#) | [Newsletter Archive](#) | [Contact](#) | [Medical Professionals](#)