

# Clinical Physician Update

December 2022

## Patient Care



### Managing inflammatory bowel disease with capsule endoscopy

Gastroenterologists at Mayo Clinic discuss current trends and future use of capsule endoscopy as an effective tool for the diagnosis and management of inflammatory bowel disease.

[Learn more](#)



### Safely scanning patients with implanted devices

The multidisciplinary MRI team at Mayo Clinic works with referring clinicians to design protocols that allow safe scans for patients with implanted devices to reach the correct diagnosis.

[Learn more](#)



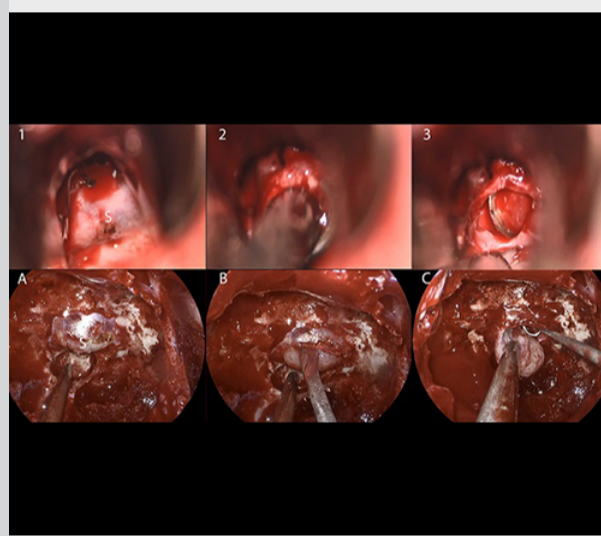
### Evaluating pediatric patients at risk of sudden cardiac death

New guidelines help primary care physicians and pediatric cardiologists identify and treat patients at risk of sudden cardiac death.

[Learn more](#)

Visit the Medical Professional Video Center to view specialty videos and Grand Rounds presentations

## Research



### Study shows 82% of patients go home the day after pituitary tumor surgery

A Mayo Clinic study documented fewer surgical complications and shorter hospital stays for individuals having pituitary tumor surgery at Mayo compared with results from a multicenter study.

[Learn more](#)

See all Family Medicine and General Internal Medicine Clinical Trials at Mayo Clinic

## Education

Mayo Clinic School of Continuous Professional Development offers [live courses](#), [livestreaming courses](#), [online continuing medical education \(CME\) courses](#) and [podcasts](#) to meet your CME needs.

See all [Family Medicine](#) and [Internal Medicine and Subspecialties Continuing Medical Education courses](#)



### Clinical Reviews 2023: 34th Annual Family Medicine and Internal Medicine Update

March 2-5, 2023  
Scottsdale, Ariz., and Livestream

This four-day continuing medical education course features updates and management strategies on various diseases.

[Register Now](#)



### 7th Annual Mayo Clinic Sports Medicine for the Clinician 2023

March 3-5, 2023  
Orlando, Fla., and Livestream

This course covers testing and referral criteria to help attendees accurately diagnose and treat sports-related conditions, as well as injuries sustained during recreational physical activities.

[Register Now](#)

## COVID-19 Updates and Resources

[Read more](#)

## Consults and Referrals

Phoenix/Scottsdale, Arizona  
844-255-4442

Jacksonville, Florida  
855-691-1265

Rochester, Minnesota  
888-380-4055

[Online Referrals](#)

## Resources

[Life-Changing Careers](#)

[Clinical Trials](#)

[Mayo Clinic School of Continuous Professional Development](#)



Comments?

We're interested in your feedback about this newsletter.

Pass It On

Invite a friend to subscribe.