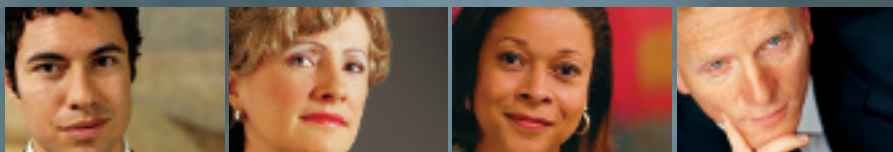




EXECUTIVE HEALTH

P R O G R A M



ENTRUST YOUR HEALTH TO THE NAME YOU KNOW

T R U S T E D

WE'VE EARNED THE RESPECT OF EXECUTIVES AND
COMPANIES FROM ALL OVER THE WORLD.



MAYO CLINIC

GONDA BUILDING



*Gonda Building
Mayo Clinic, Rochester, Minn.*

An executive's health is vital to everyday job performance, to long-range career and company planning and, above all, to one's quality of life.

When it began more than 30 years ago, the Mayo Clinic Executive Health Program was unique, developed in response to requests from business executives and corporations that recognized the importance of maintaining the good health of their leaders. And where better than one of the top medical institutions in the country?

Since then, thousands of executives each year have discovered the unique characteristics of this program that have been developed with respect to the fast-paced lives of today's top executives:

- EFFICIENT
- PERSONAL
- COMPREHENSIVE
- INTEGRATED



E F F I C I E N T

WE RESPECT YOUR TIME.





Mayo Clinic Building, Scottsdale, Ariz.

In an executive's world, there never seem to be enough hours in a day to get work done. Health concerns, as a result, often fall to the end of one's to-do list.

SCHEDULING

At Mayo Clinic, everything possible is done to coordinate with the executive's challenging schedule. This includes arranging an efficient, yet comprehensive, schedule at a choice of three Mayo Clinic locations: Jacksonville, Fla.; Rochester, Minn.; and Scottsdale, Ariz.

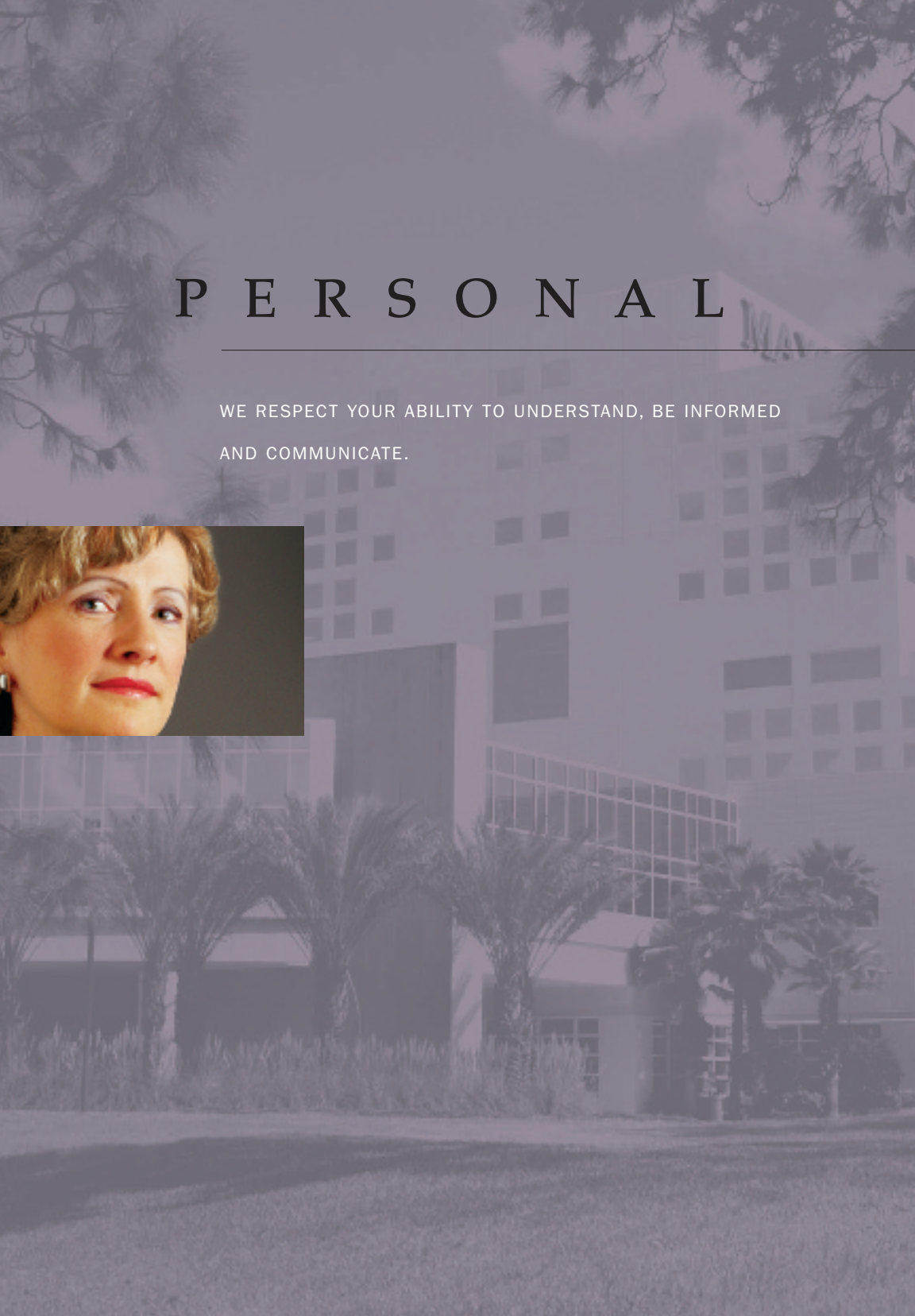


PRE-EVALUATION

An executive participating in this program receives registration forms and a health questionnaire in advance of the visit. Filling out these forms before the actual visit enables a better use of time at the clinic — and allows the coordinating Mayo physician to assess whether any special tests should be ordered. The executive may be contacted by an appointment coordinator or registered nurse to obtain information to assist in prescheduling tests or consultations.

P E R S O N A L

WE RESPECT YOUR ABILITY TO UNDERSTAND, BE INFORMED
AND COMMUNICATE.





*Davis Building
Mayo Clinic, Jacksonville, Fla.*

A DEDICATED COORDINATING PHYSICIAN

Each executive initially meets with a coordinating physician who takes all the time necessary to understand any concerns or issues, directs all aspects of the evaluation and facilitates any necessary subspecialty care. This physician may collaborate with the executive's local physician for any ongoing health care.

At the end of the evaluation, the coordinating physician reviews the full, confidential report of test results with the executive. A written report is also sent to the executive's home and, if requested, to the executive's local physician or employer.



ACCESS TO COMPLETE MAYO CLINIC RESOURCES

Mayo patients can trust that a team of Mayo experts will provide a comprehensive evaluation of their unique health issues. If a medical issue is discovered while the executive is at Mayo Clinic for an Executive Health examination, appointments can usually be scheduled with specialists within the Mayo system at the convenience of the executive.

COMPREHENSIVE

WE RESPECT YOUR DESIRE FOR THOROUGHNESS
AND PEACE OF MIND.





*Gonda Building Atrium
Mayo Clinic, Rochester, Minn.*

THE EXECUTIVE EVALUATION

The comprehensive medical evaluation at Mayo Clinic combines Mayo's traditional diagnostic expertise with preventive medicine, usually in a convenient 1- to 2-day period.

Typically, visits include:

- A comprehensive medical history and physical examination conducted by an internal medicine specialist
- Screening tests for early detection of cancer, heart disease and other serious conditions
- A cardiovascular fitness evaluation, including cardiac stress test
- A review and update of medications and immunizations, including those needed for international travel
- A lifestyle assessment, including review of nutrition, stress management, alcohol, tobacco, personal safety and other indicators of disease risk
- If desired: vision and hearing tests, dermatology consultation, stress management counseling, cosmetic surgery consultation, orthopedics consultation and others*



Mayo Clinic physicians annually review and update programs to offer patients the latest in health care.

** The time necessary to complete your evaluation may be extended if you require additional subspecialty tests or consultations.*

I N T E G R A T E D

WE RESPECT YOUR APPRECIATION FOR A TEAM APPROACH
TO MEDICAL CARE.



Scottsdale

MINNESOTA



ARIZONA



FLORIDA



THREE LOCATIONS, ONE MAYO CLINIC

Mayo Clinic differentiates itself by being an integrated group practice. This integration offers you a team of physicians with no geographic boundaries. Specialists from every medical specialty work together, joined by common systems and a philosophy of "the needs of the patient come first."

JACKSONVILLE, FLORIDA

Think tropical breezes, swaying palms, endless beaches, world-class shopping and nearby, historic St. Augustine. Ask about special arrangements that combine a Mayo Clinic executive health evaluation with area golf or tennis.

ROCHESTER, MINNESOTA

Eighty miles south of Minneapolis/St. Paul, amid rolling hills, resides the original Mayo Clinic. Visitors here enjoy a combination of small-town intimacy and large-city attractions in a place that redefines beauty with every change of season.

SCOTTSDALE, ARIZONA

Arizona's McDowell Mountains provide a beautiful backdrop for Mayo Clinic in Scottsdale. Located in the heart of the lush Sonoran Desert, Scottsdale is the home of world-class resorts and spas, restaurants, shopping, golfing and other recreational activities.



Rochester



Jacksonville

An executive health evaluation can be scheduled at any of our three locations. The settings are diverse. The reasons for choosing one over another are as individual as the people being evaluated.

But one thing doesn't change with the change of scenery. The level of care at each reflects the high standards established at Mayo Clinic more than a century ago.

For an appointment contact:

www.mayoclinic.org/executive-health

JACKSONVILLE, FLORIDA

information: 904.953.2824

appointments: 800.851.9022

e-mail: ExecHealth@mayo.edu

ROCHESTER, MINNESOTA

information + appointments: 507.284.2288

e-mail: executivehealth@mayo.edu

SCOTTSDALE, ARIZONA

information + appointments: 480.301.8088

e-mail: MCA.ExecutiveHealth@mayo.edu



4500 San Pablo Road
Jacksonville, FL 32224

200 First Street SW
Rochester, MN 55905

13400 East Shea Boulevard
Scottsdale, AZ 85259

© 2006

www.mayoclinic.org

MC1927-05rev0706

© Mayo Foundation for Medical Education and Research (MFMER). All rights reserved.
MAYO, MAYO CLINIC and the triple-shield Mayo logo are trademarks and service marks of MFMER.